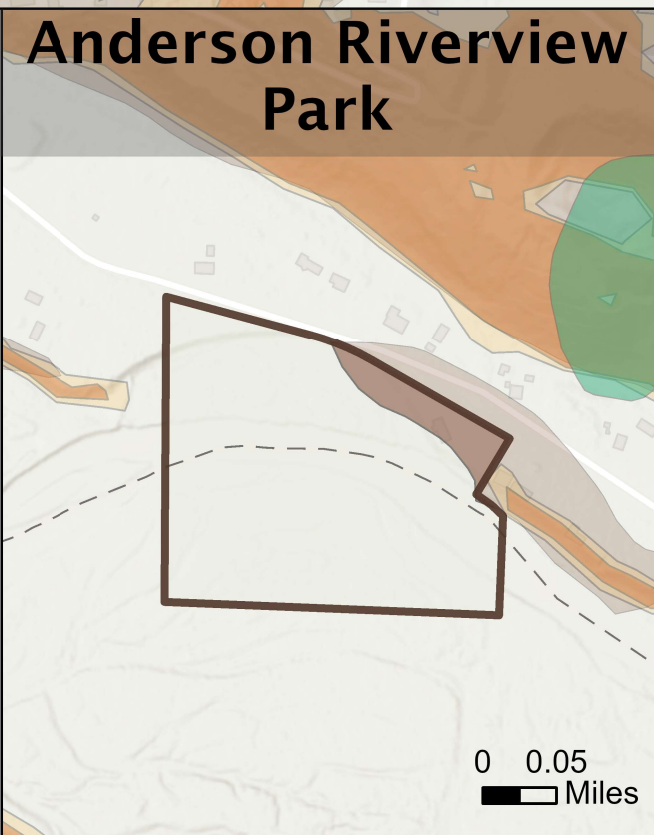
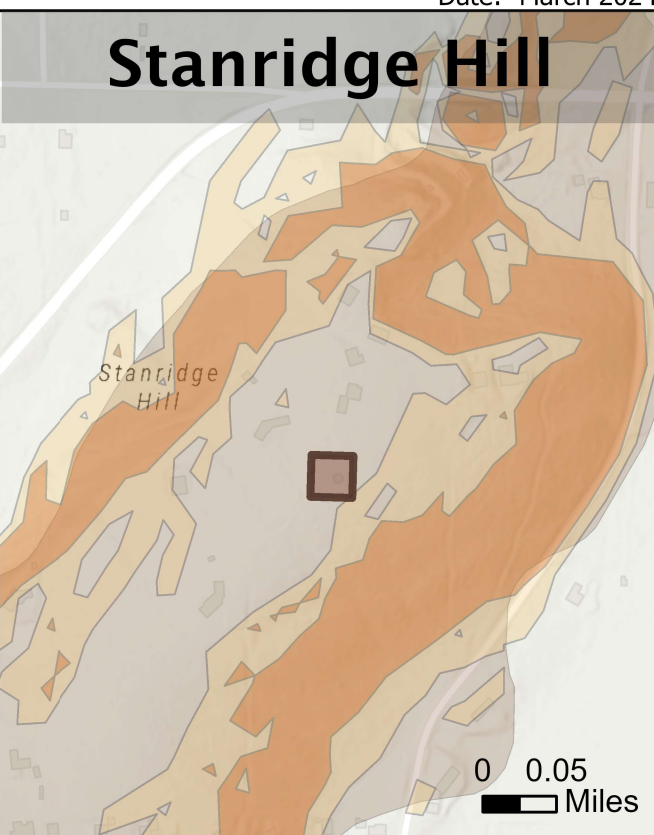
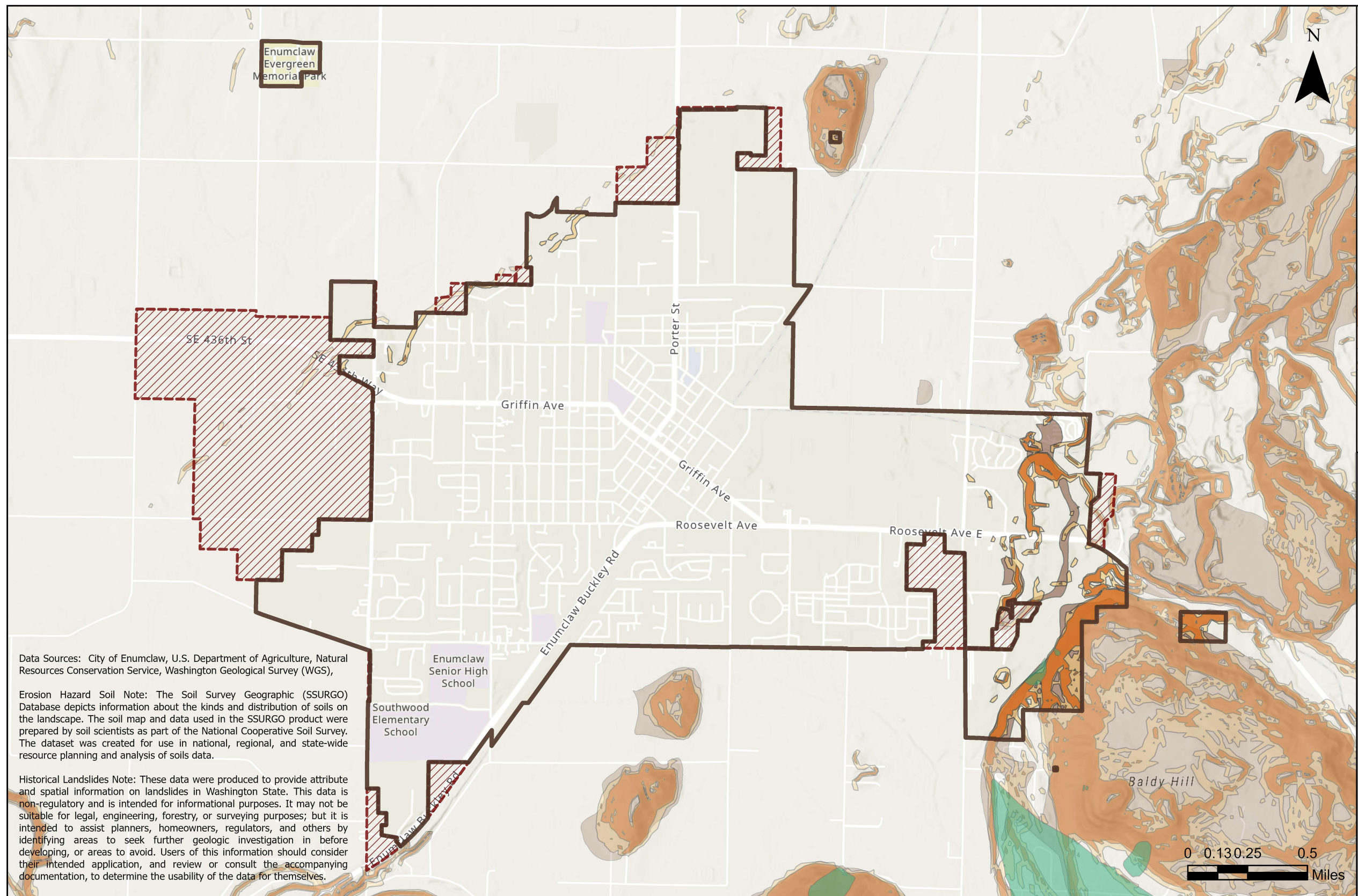


# EXHIBIT NE-3 Geologic Hazards

Date: March 2024



Data Sources: City of Enumclaw, U.S. Department of Agriculture, Natural Resources Conservation Service, Washington Geological Survey (WGS),

Erosion Hazard Soil Note: The Soil Survey Geographic (SSURGO) Database depicts information about the kinds and distribution of soils on the landscape. The soil map and data used in the SSURGO product were prepared by soil scientists as part of the National Cooperative Soil Survey. The dataset was created for use in national, regional, and state-wide resource planning and analysis of soils data.

Historical Landslides Note: These data were produced to provide attribute and spatial information on landslides in Washington State. This data is non-regulatory and is intended for informational purposes. It may not be suitable for legal, engineering, forestry, or surveying purposes; but it is intended to assist planners, homeowners, regulators, and others by identifying areas to seek further geologic investigation in before developing, or areas to avoid. Users of this information should consider their intended application, and review or consult the accompanying documentation, to determine the usability of the data for themselves.



- City Limits
- Slopes  $\geq$  40%
- Erosion Hazard Soil
- Urban Growth Area
- Slopes  $\geq$  80%
- Historical Landslides

Disclaimers: This map is a visual representation derived from the Geographic Information System of the City of Enumclaw and does not represent survey level accuracy. This map is based on the best information available as of the date shown on this map. The City of Enumclaw makes every effort to provide correct information, but makes no representation as to the completeness or accuracy of this map.

The process of data collection is continuous and the information displayed should not be considered complete. This map is not intended for regulatory purposes, as the scale, accuracy, and completeness are not sufficient to determine regulatory implications at a site-specific level. The presence of environmental features and critical areas, as defined in the Growth Management Act, must be verified at the site-specific level. These maps are intended to provide a generalized overview of the extent and distribution of key environmental features and critical areas throughout the City. This map represents the best available data at the time of publication.