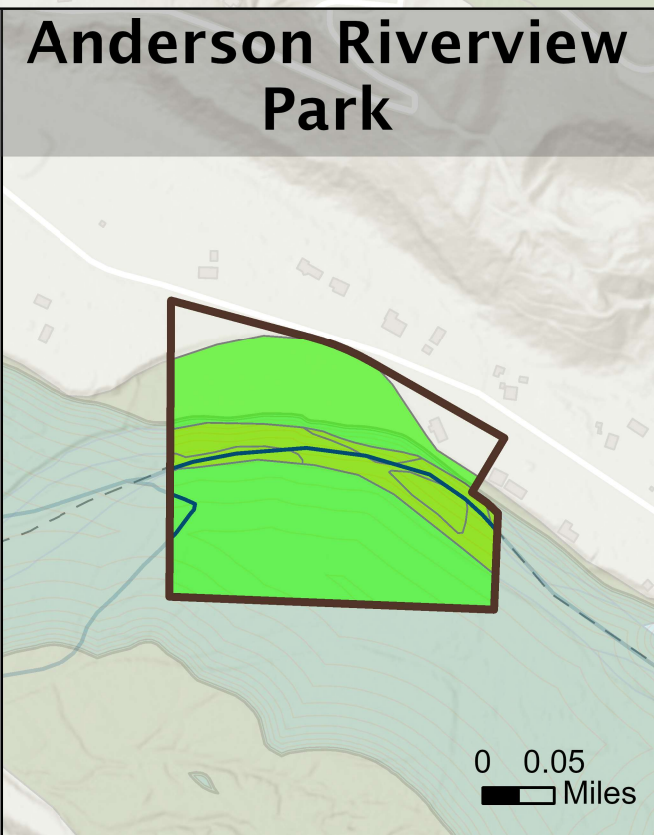
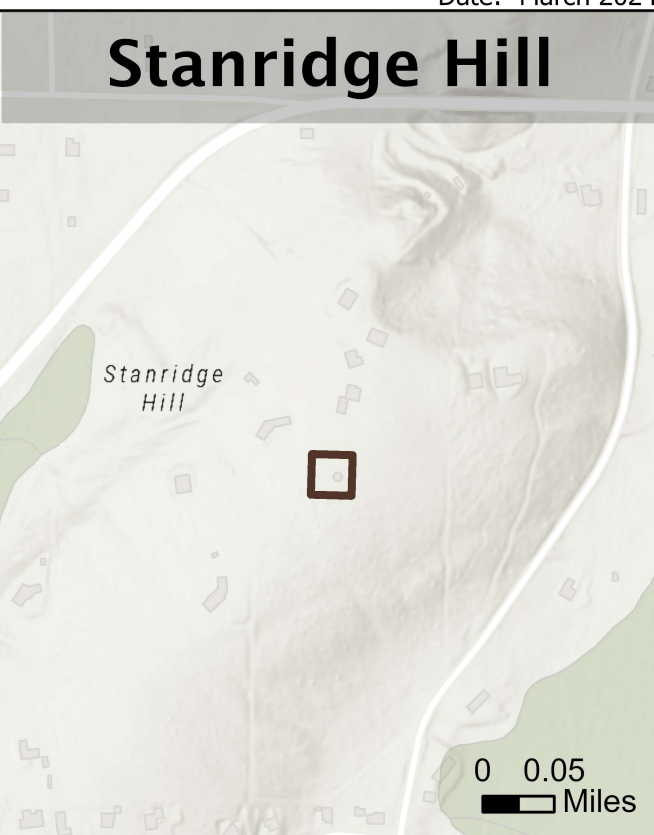
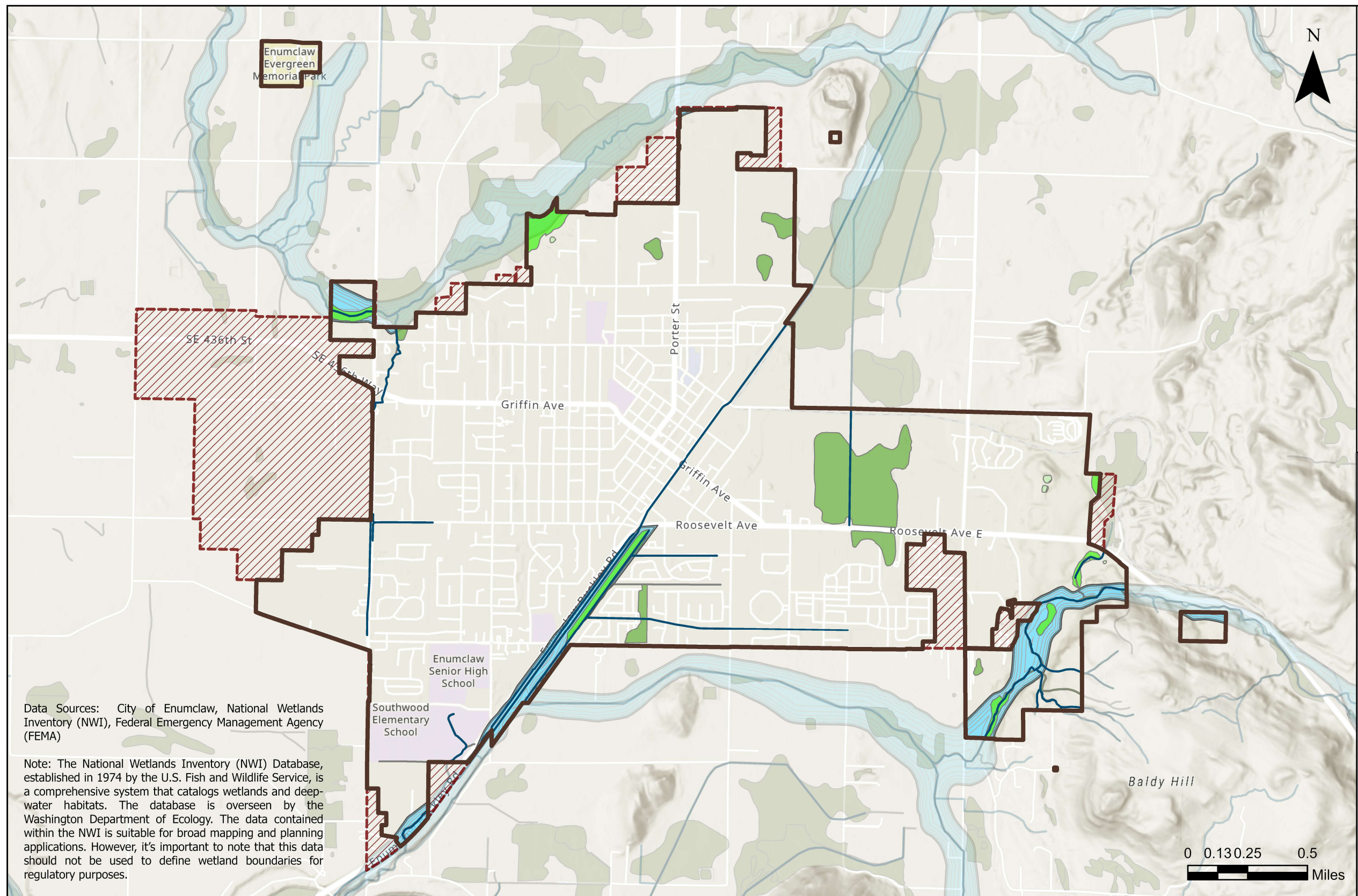


EXHIBIT NE-1 Floodplain, Streams, and Wetlands

Date: March 2024



Data Sources: City of Enumclaw, National Wetlands Inventory (NWI), Federal Emergency Management Agency (FEMA)

Note: The National Wetlands Inventory (NWI) Database, established in 1974 by the U.S. Fish and Wildlife Service, is a comprehensive system that catalogs wetlands and deep-water habitats. The database is overseen by the Washington Department of Ecology. The data contained within the NWI is suitable for broad mapping and planning applications. However, it's important to note that this data should not be used to define wetland boundaries for regulatory purposes.



- City Limits
- Urban Growth Area
- 100-Year Floodplain
- Streams
- Freshwater Emergent Wetland
- Freshwater Forested/Shrub Wetland
- Freshwater Pond
- Riverine

Disclaimers: This map is a visual representation derived from the Geographic Information System of the City of Enumclaw and does not represent survey level accuracy. This map is based on the best information available as of the date shown on this map. The City of Enumclaw makes every effort to provide correct information, but makes no representation as to the completeness or accuracy of this map.

The process of data collection is continuous and the information displayed should not be considered complete. This map is not intended for regulatory purposes, as the scale, accuracy, and completeness are not sufficient to determine regulatory implications at a site-specific level. The presence of environmental features and critical areas, as defined in the Growth Management Act, must be verified at the site-specific level. These maps are intended to provide a generalized overview of the extent and distribution of key environmental features and critical areas throughout the City. This map represents the best available data at the time of publication.