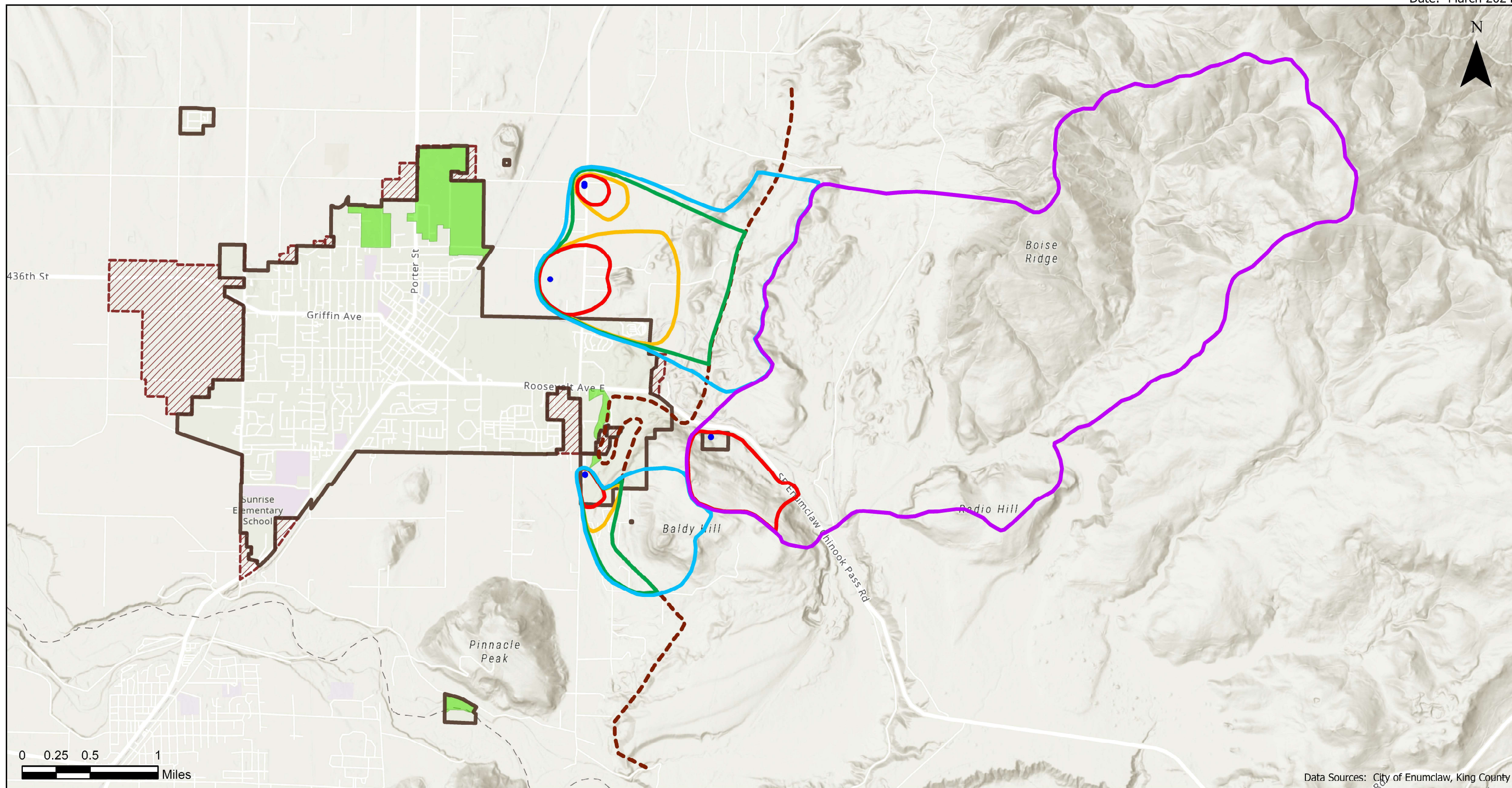


# EXHIBIT NE-2 Critical Aquifer Recharge Areas and Wellhead Protection Areas

Date: March 2024



- City Limits
- Urban Growth Area
- Critical Aquifer Recharge Areas
- City of Enumclaw Water Source Location

- Wellhead Protection Areas**
- Zone 1 (Travel-Time)
  - Zone 2 (Travel-Time)
  - Zone 3 (Travel-Time)

- Zone 4 (Buffer Area)
- Zone 4 (Surface Drainage Buffer Area)
- Bedrock Boundary (Per Booth, et al. 2006)

**Disclaimers:** This map is a visual representation derived from the Geographic Information System of the City of Enumclaw and does not represent survey level accuracy. This map is based on the best information available as of the date shown on this map. The City of Enumclaw makes every effort to provide correct information, but makes no representation as to the completeness or accuracy of this map.

The process of data collection is continuous and the information displayed should not be considered complete. This map is not intended for regulatory purposes, as the scale, accuracy, and completeness are not sufficient to determine regulatory implications at a site-specific level. The presence of environmental features and critical areas, as defined in the Growth Management Act, must be verified at the site-specific level. These maps are intended to provide a generalized overview of the extent and distribution of key environmental features and critical areas throughout the City. This map represents the best available data at the time of publication.