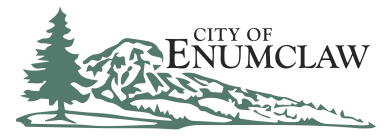


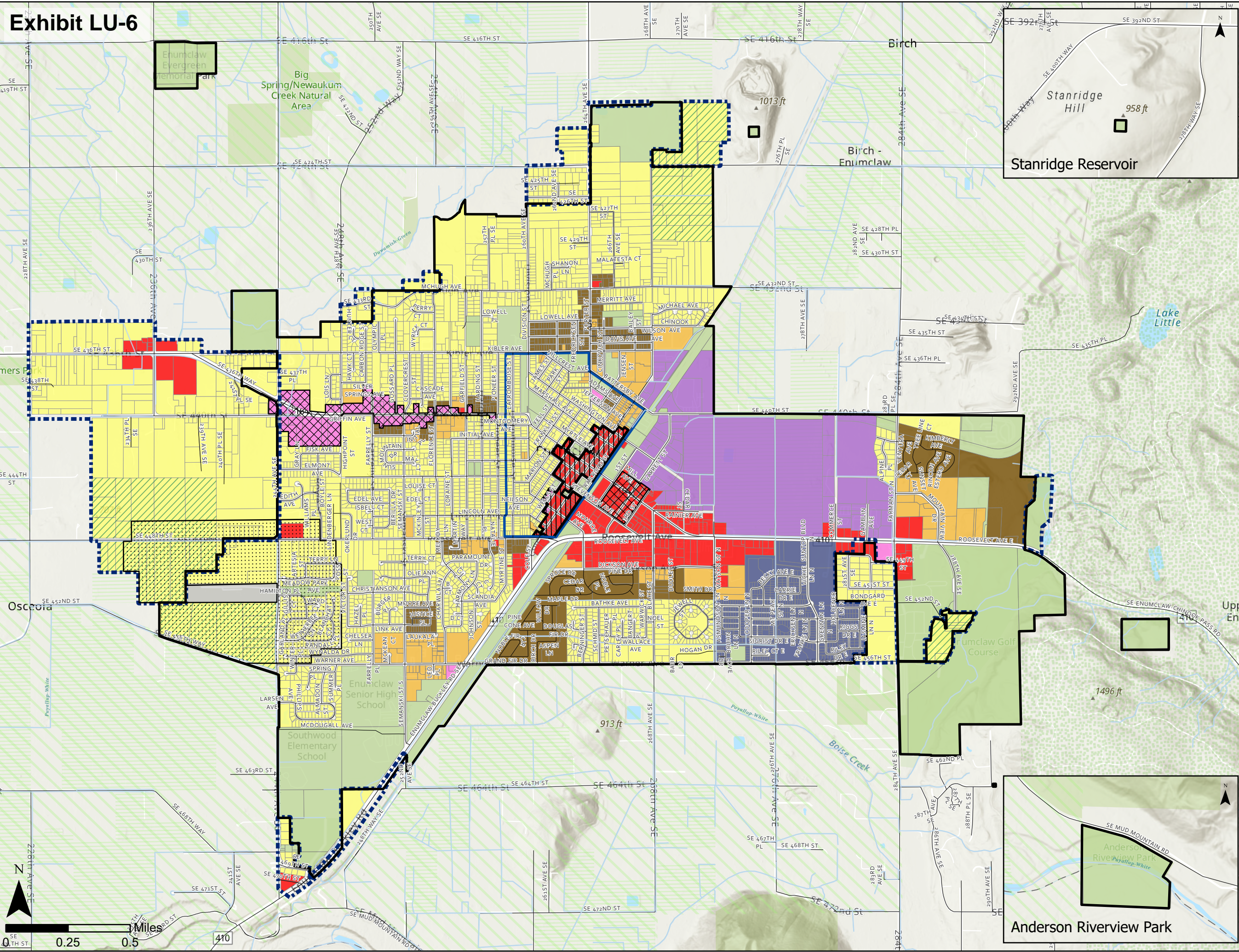
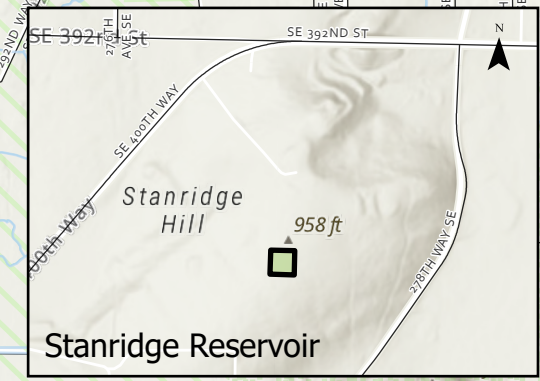
# Exhibit LU-6



DEPARTMENT OF COMMUNITY DEVELOPMENT  
1309 MYRTLE AVE, ENUMCLAW, WA 98022  
PH: (360) 825-3593

## CITY OF ENUMCLAW FUTURE LAND USE MAP

- Commercial
- Office
- Light Industrial
- Airport
- Low Density Residential
- Medium Density Residential
- Multi-Family Residential
- Planned Unit Development
- Public/Institutional
- Airport Overlay 2024 (Proposed)
- Downtown Commercial Overlay
- Old Town Overlay
- Mixed Use Overlay
- Urban Rural Transition Overlay
- KC Farmland Preservation Program
- KC Agricultural Production District
- KC Forest Production District
- City Limits
- Urban Growth Area (UGA)
- Streams



Disclaimer: This map is a visual representation derived from the Geographic Information System of the City of Enumclaw and does not represent survey level accuracy. This map is based on the best information available as of the date shown on this map. The City of Enumclaw makes every effort to provide correct information, but makes no representation as to the completeness or accuracy of this map. The process of data collection is continuous and the information displayed should not be considered complete. This map is not intended for regulatory purposes, as the scale, accuracy, and completeness are not sufficient to determine regulatory implications at a site-specific level. This map represents the best available data at the time of publication.

The City of Enumclaw shall not be liable for any general, special, indirect, incidental, or consequential damages including, but not limited to, lost revenue or lost profits resulting from the use or misuse of the information contained on this map. Any sale of this map or information on this map is prohibited except by written permission of the City of Enumclaw.

Date: December 2024