



# Water Quality Program

## Permit Submittal Electronic Certification

**Permittee:** ENUMCLAW CITY

**Permit Number:** WAR045514

**Site Address:** 1339 GRIFFIN AVE  
ENUMCLAW, WA 98022

**Submittal Name:** MS4 Annual Report Phase II Western

**Version:** 1

**Due Date:** 3/31/2026

### Questionnaire

| Number | Permit Section | Question   | Answer   |
|--------|----------------|--|--|
| 1      | S9.D.6         | Attach a map of any annexations, incorporations or boundary changes resulting in an increase or decrease in the Permittee's geographic area of permit coverage during the reporting period per S9.D.6.   | 2025 Annexation Ordinance_1_02242026112410       |
| 2      | S5.A.2; S9.D.1 | Attach updated annual Stormwater Management Program Plan (SWMP Plan). (S5.A.2; S9.D.1)   | 2026 Stormwater Management Pro_2_03102026071805  |
| 3      | S5.A           | Implemented an ongoing program to gather, track, and maintain information per S5.A.3, including costs or estimated costs of implementing the SWMP.   | Yes  |
| 4      | S5.A.5.b       | Continued to coordinate among departments within the jurisdiction to eliminate barriers to permit compliance. (S5.A.5.b)   | Yes  |
| 4a     | S5.A.5.b       | Attach a written description of internal coordination mechanisms. (S5.A.5.b) no later than March 31, 2026.   | Q4a narrative_2025 Annual Repo_4a_03102026081841 |
| 5      | S9.D.4         | If applicable, identify other entities relied on to satisfy any of the obligations under the Permit. (S9.D.4)  | Not Applicable                                   |
| 6      | S5.C.1.a       | Continue to convene an interdisciplinary team to inform and assist in the development, progress, and influence of the stormwater planning program? (S5.C.1.a.)   | Yes  |
| 12     | S5.C.1.c.i     | Continue to design and implement local development-related codes, rules, standards, or other enforceable documents to minimize impervious surfaces, native vegetation loss, and stormwater runoff, where feasible? See S5.C.1.c.i. (Required annually) | Yes  |
| 13     | S5.C.1.c.i(a)  | From the assessment described in S5.C.1.c.i (a), did you identify any administrative or regulatory barriers to implementation of LID Principles or LID BMPs? (Required annually)   | No   |
| 19     | S5.C.2         | Did you choose to adopt one or more elements of a regional program? (S5.C.2)   | Yes  |

|     |                |   |   |
|-----|----------------|---|---|
| 19a | S5.C.2         | If yes, list the elements, and the regional program.  | <p>Puget Sound Starts Here - Implemented consistent messaging with the PSSH logo present (social marketing on Facebook, catch basin markers implemented throughout city, flyers and posters on pet waste and car washing and drip and drive)</p> <p>2025 Puget Sound Starts Here General Awareness Social Media Campaign - Don't wait to inflate</p> <p>Regional Dumpster Lid Behavior Change Social Marketing Campaign</p> |
| 20  | S5.C.2         | Attach a description of general awareness efforts conducted, including your target audiences and subject areas, per S5.C.2.a.i.                       | Q20 narrative_2025 Annual Repo_20_03122026061154  |
| 21  | S5.C.2.a.ii(b) | Developed a behavior change campaign that is tailored to the community in accordance with S5.C.2.a.ii(b)? (Required no later than July 1, 2025)       | Yes   |
| 21a | S5.C.2.a.ii(b) | Attach the strategy and schedule developed in accordance with S5.C.2.a.ii.(b).  | Update_Dumpster Lid Campaign S_21a_03102026165032   |
| 22  | S5.C.2.a.ii(c) | Began implementing strategy outlined in S.5.C.2.a.ii(b). (S5.C.2.a.ii(c)) – Required by September 1, 2025)  | Yes   |
| 24  | S5.C.2.a.iii   | Provided, partnered, or promoted stewardship opportunities to encourage resident participation in activities such as those described in S5.C.2.a.iii. | Yes   |
| 24a | S5.C.2.a.iii   | Attach a list of stewardship opportunities provided.  | Q24a narrative_2025 Annual Rep_24a_03122026060535   |

|     |            |   |  |
|-----|------------|---|--|
| 25  | S5.C.3.a   | Describe in Comments field the opportunities created for the public to participate in the decision-making processes involving the development, implementation, and updates of the Permittee's SWMP and the SMAP.  | The city creates opportunities for the public to participate in the decision making process during the public speaking portion of city council meetings, attend public works committee meetings, and by contacting the Stormwater Program Manager and/or other City staff directly via the city webpage, email, or local events city staff attend such as the Street Fair.               |
| 25a | S5.C.3.a.i | Describe specific public involvement and participation opportunities provided to overburdened communities and specifically, highly impacted communities. (S5.C.3.a.i)   | The city creates opportunities for overburdened communities to participate in the decision making process during the public speaking portion of city council meetings, attend public works committee meetings, and by contacting the Stormwater Program Manager and/or other City staff directly via the city webpage, email, or local events city staff attend such as the Street Fair. |
| 26  | S5.C.3.    | Posted the updated SWMP Plan and latest annual report on your website no later than May 31. (S5.C.3.b)  | Yes  |
| 26a | S5.C.3.    | List the website address in Comments field.   | <a href="http://cityofenumclaw.net/140/Stormwater-Management-Program">http://cityofenumclaw.net/140/Stormwater-Management-Program</a>  |
| 27  | S5.C.4.    | Maintained an electronic map of the MS4 including the requirements listed in S5.C.4.?   | Yes  |
| 28  | S5.C.4.b.i | Attach file that lists all known outfall locations, sizes, and materials no later than March 31, 2026. The data shall be in one of the following formats, per S5.B.3.a.viii:<br><ul style="list-style-type: none"> <li>• ESRI file geodatabase template (feature class in a .gdb):<br/> <a href="https://fortress.wa.gov/ecy/ezshare/wq/permits/MS4GP.Mapoutfall.prelim.gdb.zip">https://fortress.wa.gov/ecy/ezshare/wq/permits/MS4GP.Mapoutfall.prelim.gdb.zip</a></li> <li>• Shapefile template:<br/> <a href="https://fortress.wa.gov/ecy/ezshare/wq/permits/MS4GP.Mapoutfall.prelim.shape.zip">https://fortress.wa.gov/ecy/ezshare/wq/permits/MS4GP.Mapoutfall.prelim.shape.zip</a></li> <li>• ArcGIS Online template (sharing template a or b via ArcGIS Online).</li> <li>• Excel template:<br/> <a href="https://fortress.wa.gov/ecy/ezshare/wq/permits/MS4GP.Mapoutfall.prelim.excel.xlsx">https://fortress.wa.gov/ecy/ezshare/wq/permits/MS4GP.Mapoutfall.prelim.excel.xlsx</a></li> </ul> | Q28_MS4_Outfall_Data_03112026_28_03112026090549  |

|     |               |  |   |
|-----|---------------|--|---|
| 32  | S5.C.5.b      | Informed public employees, businesses, and the general public of hazards associated with illicit discharges and improper disposal of waste. (S5.C.5.b) | Yes   |
| 32a | S5.C.5.b      | Describe actions in Comments field. (S5.C.5.b)   | IDDE training of City Staff, IDDE related flyers and posts on social media, business source control inspection outreach on IDDE and spill response, IDDE response education and technical assistance. See Q32a Attachment for additional information on IDDE related actions performed by the city. |
| 33  | S5.C.5.c      | Implemented an ordinance or other regulatory mechanism to effectively prohibit non-stormwater, illicit discharges as described in S5.C.5.c.            | Yes   |
| 35  | S5.C.5.d.i    | Implemented procedures for conducting illicit discharge investigations in accordance with S5.C.5.d.i.  | Yes   |
| 35a | S5.C.5.d.i    | Cite field screening methodology in Comments field.  | Illicit Connection and Illicit Discharge Field Screening and Source Tracing Guidance Manual (Herrera Environmental Consultants, Inc.; May 2020 Revision)  |
| 36  | S5.C.5.d.i(a) | Percentage of MS4 coverage area screened in the reporting year per S5.C.5.d.i. (Required to screen 12% on average each year.)                          | 56  |
| 36a | S5.C.5.d.i(a) | Cite field screening techniques used to determine percent of MS4 screened.   | MS4 catch basin visual inspections (Percentage does not include TMDL related bacterial field screening, IDDE follow-up inspections, storm pipe CCTV inspections, and precision mapping inspections performed)   |

|     |  |   |   |
|-----|--|---|---|
| 37  | S5.C.5.d.ii                              | Describe how you publicized a hotline telephone number for public reporting of spills and other illicit discharges in the Comments field. (S5.C.5.d.ii)   | The spills hotline number for the City is publicized on the City Public Works Webpage and Stormwater Management Program Webpage. This number is also provided in IDDE education and outreach posters, flyers, letters, etc. The City routinely provides this number in spills education and outreach posts on our Public Works Facebook page and also at our booth during the annual street fair. |
| 38  | S5.C.5.d.iii                             | Implemented an ongoing illicit discharge training program for all municipal field staff per S5.C.5.d.iii.   | Yes   |
| 39  | S5.C.5.e                                 | Implemented an ongoing program to characterize, trace, and eliminate illicit discharges into the MS4 per S5.C.5.e.  | Yes   |
| 40  | S5.C.5.f                                 | Implemented an ongoing illicit discharge training program for all staff responsible for implementing the procedures and program described in S5.C.5.f.  | Yes   |
| 41  | S5.C.5.g                                 | Attach a report with data describing the actions taken to characterize, trace, and eliminate each illicit discharge reported to, or investigated by, the Permittee as described in S5.C.5.g. The submittal must include all of the applicable information and must follow the instructions, timelines, and format described in Appendix 13. | WAR045514-2025-ImportedIDDEs_03122026075920   |
| 42  | S5.C.6.b.i-iii                           | Continued to implement an ordinance or other enforceable mechanism to effectively address runoff from new development, redevelopment, and construction sites per the requirements of S5.C.6.b.i-iii.  | Yes   |
| 44  |  | Does the ordinance or other enforceable mechanism follow a Phase I program approved by Ecology (S5.C.6.b.i)?  | No  |
| 45  | S5.C.6.b.i. and Section 5 of Appendix 1  | Number of adjustments granted to the minimum requirements in Appendix 1. (S5.C.6.b.i. and Section 5 of Appendix 1)  | 0   |
| 46  | S5.C.6.b.i., and Section 6 of Appendix 1 | Number of exceptions granted to the minimum requirements in Appendix 1. (S5.C.6.b.i., and Section 6 of Appendix 1)  | 0   |
| 47  | S5.C.6.c.i                               | Reviewed Stormwater Site Plans for all proposed development activities that meet the thresholds adopted pursuant to S5.C.6.b.i. (S5.C.6.c.i)  | Yes   |
| 47a | S5.C.6.c.i                               | Number of site plans reviewed during the reporting period.  | 18  |
| 48  | S5.C.6.c.ii                              | Inspected, prior to clearing and construction, permitted development sites per S5.C.6.c.ii?   | Yes   |

|     |               |   |   |
|-----|---------------|---|---|
| 49  | S5.C.6.c.iii  | Inspected permitted development sites during construction to verify proper installation and maintenance of required erosion and sediment controls per S5.C.6.c.iii.   | Yes   |
| 49a | S5.C.6.c.iii  | Number of construction sites inspected per S5.C.6.c.iii.  | 17  |
| 49b | S5.C.6.c.iv   | Inspected stormwater treatment and flow control BMPs/facilities and catch basins in new residential developments at least twice per 12-month period with no less than 4 months between inspections, per S5.C.6.c.iv?  | Yes   |
| 50  | S5.C.6.       | Inspected all permitted development sites upon completion of construction and prior to final approval or occupancy to ensure proper installation of permanent stormwater facilities. (S5.C.6.c.v)   | Yes   |
| 51  | S5.C.6.       | Verified a maintenance plan is completed and responsibility for maintenance is assigned for projects prior to final approval and occupancy being granted. (S5.C.6.c.v)  | Yes   |
| 52  | S5.C.6.c.viii | Number of enforcement actions taken during the reporting period (based on construction phase inspections at new development and redevelopment projects, per S5.C.6.c.ii-iv). (S5.C.6.c.viii)  | 0   |
| 53  | S5.C.6.c.vi   | Achieved at least 80% of scheduled construction-related inspections. (S5.C.6.c.vi)  | Yes   |
| 54  | S5.C.6.d      | Made online links to Ecology's Construction Stormwater General Permit Notice of Intent, the Industrial Stormwater General Permit Notice of Intent, and the registration requirements for Underground Injection Control (UIC) available to representatives of proposed new development and redevelopment? (S5.C.6.d) | Yes   |
| 55  | S5.C.6.e      | All staff whose primary job duties are implementing the program to control stormwater runoff from new development, redevelopment, and construction sites including permitting, plan review, construction site inspections, and enforcement are trained to conduct these activities. (S5.C.6.e)                      | Yes   |
| 56  | S5.C.7.b      | Attach a list of projects that are fully funded, started, completed and/or scheduled for implementation during this permit term for the purpose of meeting S5.C.7.b, with the information and formatting specified in Appendix 12. Attach an updated list annually. (S5.C.7.b,)                                     | Q56 Project List_2025 Annual<br>R_56_03112026120550     |
| 57  | S5.C.8.b      | Updated inventory to identify institutional, commercial and industrial properties which have the potential to generate pollutants to the Permittee's MS4 per S5.C.8.b? (Required at least once every five years)  | Not Applicable  |
| 58  | S5.C.8.a-d    | Attach a summary of actions taken to implement the source control program, per S5.C.8.a-d.  | Q58 narrative_2025 Annual<br>Repo_58_03122026060<br>919 |

|     |                |   |   |
|-----|----------------|---|---|
| 59  | S5.C.8.d       | Attach a list of inspections, per S5.C.8.c.v, organized by the business category, noting the number of times each business was inspected and if enforcement actions were taken, per S5.C.8.d.   | Q59 Source Control Inspections_59_031220 26061545 |
| 60  | S5.C.8.e       | Implemented an ongoing source control training program per S5.C.8.e?  | Yes   |
| 61  | S5.C.9.a       | Implemented maintenance standards that are as protective, or more protective, of facility function than those specified in the Stormwater Management Manual for Western Washington or a Phase I program approved by Ecology per S5.C.9.a? | Yes   |
| 63  | S5.C.9.a       | Applied a maintenance standard for a facility or facilities which do not have maintenance standards specified in the Stormwater Management Manual for Western Washington? (S5.C.9.a)  | Not Applicable                                    |
| 64  | S5.C.9.a.ii    | Verified that maintenance was performed per the schedule in S5.C.9.a.ii when an inspection identified an exceedance of the maintenance standard.  | Yes   |
| 64a | S5.C.9.a.ii    | Attach documentation of maintenance time frame exceedances that were beyond the Permittee's control.  | Not Applicable                                    |
| 65  | S.5.C.9.b.i(a) | Implemented an ordinance or other enforceable mechanisms to verify long-term operation and maintenance of stormwater treatment and flow control BMPs/facilities regulated by the permittee per S.5.C.9.b.i(a)?                            | Yes   |
| 66  | S5.C.9.b.i(b)  | Inspected stormwater treatment and flow control BMPs/facilities regulated by the Permittee per S5.C.9.b.i(b)  | Yes   |
| 66a | S5.C.9.b.i(b)  | Are you using a reduced stormwater treatment and flow control BMPs/facilities inspection frequency?   | No  |
| 66b | S5.C.9.b.i(b)  | If using a reduced inspection frequency on stormwater facilities regulated by the Permittee for the first time during this permit cycle, attach documentation per S5.C.9.b.i.(b).   | Not Applicable                                    |
| 67  | S5.C.9.b.ii    | Achieved at least 80% of required inspections to verify adequate long-term O&M. (S5.C.7.b.ii)   | Yes   |
| 68  | S5.C.9.c.i     | Annually inspected municipally owned or operated permanent stormwater treatment and flow control BMPs/facilities. (S5.C.9.c.i)  | Yes   |
| 68a | S5.C.9.c.i     | Number of known municipally owned or operated stormwater treatment and flow control BMPs/facilities. (S5.C.9.c.i)   | 25  |
| 68b | S5.C.9.c.i     | Number of facilities inspected during the reporting period.   | 25  |
| 68c | S5.C.9.c.i     | Number of facilities for which maintenance was performed during the reporting period.   | 22  |
| 69  | S5.C.9.c.i     | If using reduced inspection frequency for the first time during this permit cycle, attach documentation per S5.C.9.c.i.   | Not Applicable                                    |
| 70  | S5.C.9.c.ii    | Conducted spot checks and inspections (if necessary) of potentially damaged stormwater facilities after major storms as per S5.C.7.c.ii.  | Yes   |

|     |                              |   |   |
|-----|------------------------------|---|---|
| 71  | S5.C.9.c.iii                 | Inspected municipally owned or operated catch basins and inlets every two years or used an alternative approach? Cleaned as needed? (S.5.C.9.c.iii)   | Yes   |
| 71a | S5.C.9.c.iii                 | Number of known catch basins and inlets?  | 3185  |
| 71b | S5.C.9.c.iii                 | Number of catch basins and inlets inspected during the reporting period?  | 1799  |
| 71c | S5.C.9.c.iii                 | Number of catch basins and inlets cleaned during the reporting period?  | 337   |
| 72  | S5.C.9.c.iii                 | Attach documentation of alternative catch basin inspection approach for those owned or operated by the Permittee, if used, per S5.C.9.c.iii.  | Not Applicable                                    |
| 73  | S5.C.9.d                     | Implemented practices, policies and procedures to reduce stormwater impacts associated with runoff from all lands owned or maintained by the Permittee, and road maintenance activities under the functional control of the Permittee. (S5.C.9.d)   | Yes   |
| 79  | S5.C.9.f                     | Implemented a Stormwater Pollution Prevention Plan (SWPPP) for all heavy equipment maintenance or storage yards, and material storage facilities owned or operated by the Permittee in areas subject to this Permit that are not required to have coverage under an NPDES permit that covers stormwater discharges associated with the activity. (S5.C.9.f) | Yes   |
| 80  | S5.C.9.g                     | Implemented an ongoing training program for Permittee employees whose primary construction, operations or maintenance job functions may impact stormwater quality. (S5.C.9.g)   | Yes   |
| 81  | S7.A                         | Complied with the Total Maximum Daily Load (TMDL)-specific requirements identified in Appendix 2. (S7.A)  | Yes   |
| 81a | S7.A                         | List any requirements that were not met.  | Not Applicable                                    |
| 82  | S7.A                         | For TMDLs listed in Appendix 2: Attach a summary of relevant SWMP and Appendix 2 activities to address the applicable TMDL parameter(s). (S7.A)   | Q82 narrative_2025 Annual Repo_82_03122026104 910 |
| 83  | S8.A.1, S8.A.2.a             | Submitted payment for cost-sharing for Stormwater Action Monitoring (SAM) status and trends monitoring no later than December 1, 2024 (S8.A.1); and no later than August 15 of each subsequent year? (S8.A.2.a.)  | Yes   |
| 85  | S8.B.1, S5.B.2.a or S8.B.2.c | Submitted payment for cost-sharing for SAM effectiveness and source identification studies no later than December 1, 2024 (S8.B.1); and no later than August 15 of each subsequent year (S8.B.2.a or S8.B.2.c)?   | Yes   |
| 87  | S8.C.1.b and Appendix 9      | If conducting stormwater discharge monitoring in accordance with S8.C.1, submitted a QAPP to Ecology no later than February 1, 2025? (S8.C.1.b and Appendix 9)  | Not Applicable                                    |

|    |                           |  |                |
|----|---------------------------|--|----------------|
| 88 | S8                        | If conducting stormwater discharge monitoring in accordance with S8.C.1, attach a data and analysis report per S8.C.1. and Appendix 9. (Due annually beginning March 31, 2026.)                                | Not Applicable |
| 89 | G3                        | Notified Ecology in accordance with G3 of any discharge into or from the Permittees MS4 which could constitute a threat to human health, welfare or the environment. (G3)                                      | Yes            |
| 90 | G3                        | Took appropriate action to correct or minimize the threat to human health, welfare, and/or the environment per G3.A.   | Yes            |
| 91 | Compliance with standards | Notified Ecology within 30 days of becoming aware that a discharge from the Permittee's MS4 caused or contributed to a known or likely violation of water quality standards in the receiving water. (S4.F.1)   | Not Applicable |
| 92 | Compliance with standards | If requested, submitted an Adaptive Management Response report in accordance with S4.F.3.a.  | Not Applicable |
| 93 | Compliance with standards | Attach a summary of the status of implementation of any actions taken pursuant to S4.F.3 and the status of any monitoring, assessment, or evaluation efforts conducted during the reporting period. (S4.F.3.d) | Not Applicable |
| 94 | G20                       | Notified Ecology of the failure to comply with the permit terms and conditions within 30 days of becoming aware of the non-compliance. (G20)   | Not Applicable |
| 95 | G20                       | Number of non-compliance notifications (G20) provided in reporting year. List permit conditions described in non-compliance notification(s) in Comments field.   | Not Applicable |

*I certify under penalty of law, that this document and all attachments were prepared under my direction or supervision in accordance with a system designed to assure that qualified personnel properly gather and evaluate the information submitted. Based on my inquiry of the person or persons who manage the system or those persons directly responsible for gathering information, the information submitted is, to the best of my knowledge and belief, true, accurate, and complete. I am aware that there are significant penalties for submitting false information, including the possibility of fine and imprisonment for knowing violations.*

Eric Palmer

3/12/2026 11:08:49 AM

Signature

Date

## Q4a Narrative for City of Enumclaw 2025 Annual Report

---

### Q4a Attach written description of internal coordination mechanisms. S5.A.5.b

The following is a description of internal department coordination mechanisms used to help eliminate barriers to permit compliance:

- Bi-weekly scheduled meeting between the Public Works and Community Development Departments: This meeting is utilized to discuss the status of active and future planned commercial and residential development projects in the City, coordinate comprehensive plan and City code amendment updates, make decisions regarding stormwater management-related policies and programs, and deliberate on necessary code enforcement and project compliance issues; all aspects of which are integral to eliminating barriers with stormwater permit compliance.
- Monthly scheduled Public Works Coordination Meeting: This meeting is held with all Public Works Department managers (stormwater, operations, wastewater, transportation, etc.) to discuss and provide updates on all public works related topics including the SWMP Plan, public works projects, and ultimately stormwater permit related compliance topics. Any potential barriers to stormwater permit compliance are identified, discussed, and appropriate plans put in place to eliminate those barriers.
- Pre-application meetings: Regular pre-application meetings are held between the Community Development Department, Public Works Department, and interested applicants of proposed commercial and residential development projects in the City. At these meetings, the Public Works Department provides information on all related stormwater development/re-development requirements applicable to the project. This meeting helps ensure that potential barriers to compliance with permit development/re-development requirements are discussed upfront and addressed by the applicant prior to formal submission. This meeting also helps ensure the all internal departments are in the loop as to what stormwater requirements will apply to a specific project.
- The City has implemented a software called PermitTrax to properly organize and manage development related permits and inspections, code enforcement, and business licenses by all departments. Among other things, this software allows all departments to schedule and assign relevant reviews and inspections, acquire status updates, and view correspondence related to stormwater permit compliance.
- Through the use of PermitTrax, all business licenses applied for are screened by both the permit tech and public works department for stormwater related issues that may need to be addressed by the business prior to approving the business license. Applicable business license applications are reviewed in more detail to confirm applicable stormwater requirements; ultimately helping to eliminate barriers that may develop if a business license was approved prior to addressing these issues.
- The City has implemented a software called E-Plan Review which allows for digital review and markup of plans. The software not only streamlines the stormwater plan review process on all re-development/development projects, it also allows staff to review comments and associated revisions being required by other departments to ensure they do not inadvertently create a barrier to permit compliance on a specific project.
- The City has implemented a software called Cartegraph (Open Gov) which is an asset management software designed for Public Works Departments to better organize, track, inspect, maintain, and analyze infrastructure, including stormwater infrastructure. This software is critical in coordinating permit required O&M activities between the Public Works Engineering Staff and

Public Works Operations Staff. This includes routine inlet inspections/maintenance, stormwater facility inspections/maintenance, illicit discharge response activities, street sweeping, and other O&M requirements of the permit.

- Annual Budget Meetings – An annual meeting is held between the Public Works Department, City Administration, and Finance Department to discuss the current and future projected budget of the stormwater utility. This meeting is used to outline what additional resources and staffing may be necessary to maintain stormwater permit compliance and if a rate increase will be required. Subsequent budget workshop meetings are held with the City Council to discuss related topics in more detail and prepare for vote on any proposed stormwater utility rate increases.
- Public Works Committee Meetings – The Public Works Director meets with the Public Works committee of the City Council prior to each City Council meeting on the 2<sup>nd</sup> and 4<sup>th</sup> Monday of every month to discuss Public Works related needs and updates, including stormwater utility and permit requirements. These meetings help to educate council members and eliminate barriers or concerns that the City Council may have when voting on stormwater resolutions and ordinances that are required to be adopted in order to stay in compliance with the stormwater permit.
- The City of Enumclaw has a clearly defined organization including authority between directors and staff level positions. All position roles and responsibilities are defined and help ensure there are no gaps in permit compliance. Overall permit implementation has been delegated to the Stormwater Program Manager. The City’s Engineering Tech also assists with implementation of the permit and management of the Stormwater Source Control program.
- The City is continually investing in software and equipment to effectively manage permit requirements and ultimately permit compliance and coordination between departments (including cell phones, iPads, ArcGIS, sharepoint, PermitTrax, AutoCAD, Microsoft Office, E-Plan, Cartegraph, sewerAI and other related assets/software).

## Q20 Narrative for City of Enumclaw 2025 Annual Report

---

### Q20 Attach description of general awareness efforts conducted including target audiences and subject areas S5.C.2a.i

The following description of public education outreach efforts conducted corresponds with work plan elements outlined in Table 3-1 of the City of Enumclaw 2025 Stormwater Management Plan.

#### EDUC-1

Task Description: Collaborate with other NPDES Permittees through Stormwater Outreach for Regional Municipalities (STORM) and Puget Sound Starts Here (PSSH) efforts to promote regional education and outreach programs with consistent messaging.

- Member of STORM listserv. The STORM website, resource reservoir, and content-rich email updates from the STORM Coordinator provide stormwater education and outreach updates and links to resources that inform outreach efforts and provide consistent messaging that can be used in the region for educating the general public on general impacts of stormwater on surface waters. Involvement with storm also included various survey participation including the STORM annual Survey; all of which are utilized to help direct regional outreach initiatives through STORM.
- Continued using public education outreach literature received from King County Dept. of Natural Resources, Water & Land Resources Division, the Department of Ecology and *Puget Sound Starts Here* regarding educating the general public on impacts of pet waste, drip and drive, and car wash pollution issues. Implemented consistent messaging with the PSSH logo present (social marketing on Facebook, catch basin markers implemented throughout city, flyers and posters on pet waste, spills response, don't wait to inflate, car washing, and don't drip and drive themes), participated in STORM surveys and are part of the email distribution group. City staff also attended STORM meetings when available.
- 2025 Puget Sound Starts Here General Awareness Social Media Campaign - The City contributed funds to an online social media campaign with various PSSH ads previously developed and rated based on effectiveness for implementation. The 2025 campaign continued to focus on general awareness of car pollution, specifically with raising awareness around proper ways to care for vehicles to reduce pollution. Topics included maintaining tires, keeping tires properly inflated, using car washes, fixing leaks, watching for drips, recycling dirty oil, and others. Social media ads were posted on various social media platforms throughout the Puget Sound and directly on the City of Enumclaw Facebook page by City staff during the months of November and December. The campaign was again optimized over a longer 2-month period to create more media efficiency opportunities, providing the case that lengthening the PSSH campaign creates paid media efficiencies for all of the collective jurisdiction dollars. Media in the campaign was also developed to reach Spanish, Vietnamese, Korean and audiences of other languages. In addition to social media, the 2025 campaign also included a paid media Campaign in the Seattle times. Ultimately, the 2025 campaign ad efforts reached nearly 600,000 residents in Washington State, generated over 51,000 website visits to PSSH DontWaitToInflate.Org, and resulted in over 3.4million impressions on social media. The campaign also had over 4,200 social media post reactions, 243 shares, 100 saves, and 90 comments. Results of the campaign indicated that the animated video content resulted in significantly higher click engagement and the highest volume of clicks which will be helpful for development of future campaigns. This year's campaign also included a small survey for which results indicated that most residents in Washington are not familiar with the toxins produced from tires and impacts on salmonids; further emphasizing the need to continue this important campaign. As a part of this regional effort the City was able to

provide far more reach and key media performances across the region and our jurisdiction than we could get by doing something similar on our own.

- Regional Dumpster Lid Behavior Change Social Marketing Campaign. The City is part of a regional group consisting of over 30 jurisdictions which implemented a dumpster lid behavior change campaign designed to promote commercial businesses in keeping dumpster lids shut to protect surface water quality. The pilot campaign in 2021 resulted in over a 25% increase in dumpster lid closure up to 77% from the baseline. Also, the final lid closure rate for business participating in the pilot rose 57% over the baseline observations. In 2025, the City again incorporated the dumpster outreach campaign into our business source control inspection program but also expanded the program at multi-family residential sites. Through this program, dumpster lid outreach was performed and campaign consistent messaging implemented on dumpsters. Dumpster lid outreach was performed at 25 commercial/multifamily sites in 2025. Of the sites where outreach was performed, only 2 required additional follow-up due to ongoing issues which was an improvement from that experienced during the pilot program.

#### EDUC-2

Task Description: Continue implementation of storm drain pollution marker program.

- Implemented consistent messaging with the PSSH logo present on catch basin markers installed throughout the city. Markers inform residents not to pollute in the storm drain because catch basins flow to a stream and ultimately to the Puget Sound. An estimated 29 markers were installed in 2025 at catch basins within new residential subdivisions. The city purchases and supplies the markers to the contractor who is required to install them as a condition of permitting. City staff inspect to confirm proper marker installation prior to closing out of the permit. In 2025, through the source control inspection program, city staff also stenciled 2 pollution markers on catch basins at gas stations in the area which are more susceptible to spills.

#### EDUC-3

Task Description: Follow social marketing practices and methods to continue implementation of a behavior change campaign that is tailored to our community. Develop a strategy and schedule to implement our current campaign more effectively based on recommendations from the 2024 evaluation report and start to implement.

- Regional Dumpster Lid Behavior Change Social Marketing Campaign. The City is part of a regional group originally consisting of over 30 jurisdictions which implemented a dumpster lid behavior change campaign designed to promote commercial businesses in keeping dumpster lids shut to protect surface water quality. The pilot campaign in 2021 resulted in over a 25% increase in dumpster lid closure up to 77% from the baseline. Also, the final lid closure rate for business participating in the pilot rose 57% over the baseline observations. In 2025, the City again incorporated the dumpster outreach campaign into our business source control inspection program. The campaign was also expanded from commercial business to a new target audience of multi-family residential. This expansion in target audience was based on evaluation performed of the existing campaign and observed issues experienced at multi-family residential sites. Additionally, in 2025, in lieu of only providing dumpster lid outreach to businesses with observed dumpster issues at time of inspection, the city source control inspector began performing dumpster outreach at all businesses who utilized a dumpster to implement the campaign consistently and more effectively throughout the city. Through this program, dumpster lid outreach was performed and campaign consistent messaging implemented on keeping dumpster lids closed at 25 of the 32 sites inspected (22 businesses and 10 multifamily residential apartments). This included addition of campaign created outreach stickers on dumpsters which were improved from the original pilot stickers (increased graphic size, incorporated universal dumpster image, and showed human participation). Results of the campaign in 2025 appeared to be further improved from those experienced during the pilot program with only 2 businesses requiring additional follow-up due to ongoing issues. In addition to educating businesses/multi-

family sites on the need to keep dumpster lids closed, staff provided education on other dumpster related issues such as illicit discharge and housekeeping issues. The dumpster outreach Campaign information is incorporated onto the Washington Stormwater Center Website located here: <https://www.wastormwatercenter.org/permit-assistance/municipal/dumpster-outreach-group/>. As a part of this regional general awareness campaign effort, the City was able to provide far more reach around the region and in our jurisdiction.

#### EDUC-4

Task Description: Continue to incorporate business spill kit and pollution prevention behavior change program into source control inspections.

- As a component of the source control inspection program, the City continued to incorporate our previous ECOSS spill outreach program into its source control business inspection program. With this, outreach was performed in-house by city staff. As part of spills outreach, the City source control inspector assists businesses with spill related source control BMP compliance through providing:
  - Site drainage maps to be used by the business (ground truthing as needed).
  - Spill plan templates for businesses to utilize for creation of their site-specific spill plan.
  - Posters with procedures for typical spill clean-up and information on agencies that need to be notified of spills.
  - Information on Spill kit supplies needed on site as well as vendors to contact for re-stock of supplies.
  - Contact list of various vendors in the area who can assist with spill clean-up as well as maintenance of the sites stormwater system.
  - Source control inspection flyer with helpful educational information on typical source control BMPs implemented at most sites.
  - A wall poster noting the 4Cs (Cover, Capture, Clean, Contain) to keeping pollution out of the storm drain.
  - Pollution prevention training participation tracking form.
- In addition to the resources provided above, City staff assisted businesses with application of pollution stencils at high risk catch basins (typically at gas stations) to help educate the general public not to pollute as the facilities drain to surface waters and not the sewer.
- On an as need basis, the City will contract a translator service to perform spill kit outreach at local businesses for which English is a second language and additional assistance is needed. In 2025 there was not a need for this outside assistance by a translator.
- This pollution prevention outreach engages and educates staff from new and repeat local businesses about spills and potential polluted runoff from their site. Outreach and materials are provided in multiple languages as needed. As part of the project, staff evaluates behavior and level of knowledge before and after training was provided during the post inspection. The results are then used by the City to determine how the campaign may need to be adjusted to improve effectiveness. This outreach activity has a business target audience with a subject area of general impacts of illicit discharges on surface waters.
- The previously provided Pollution Prevention Outreach provided by ECOSS was conducted in nearly 40 municipalities in the Puget Sound provided over 4,500 businesses. Most of these businesses visited were automotive (20%) and food service industries (35%). Pre and post service surveys by ECOSS indicated that a significant improvement of understanding where polluted stormwater runoff goes was established as part of the outreach effort (increase from 66 to 91%). Outreach efforts also improved business employee training on spill prevention from 14% to 68%. Also, since ECOSS outreach, 84% of businesses have adopted basic spill prevention practices. These results indicate that this regional outreach effort is providing the desired

behavior change which should ultimately reduce the quantity of pollutants entering surface waters in the Puget Sound. This information further re-iterates the importance of continuing similar spill outreach efforts as a component of the City's source control inspection program.

- Implementation of this behavior change campaign as a component of the source control inspection program has not only helped businesses comply with operational source control BMP requirements, it has ultimately helped reduce pollutants from entering surface waters in the Enumclaw and the surrounding region. See the source control inspection recap information for the number of businesses inspected in 2025 and for which this outreach was performed.

#### EDUC-5

Task Description: Continue to educate business owners and general public during IDDE response efforts.

- The city responded to 25 illicit discharge or illicit connection incidents in 2025. As a component of these responses, business owners/employees and/or the general public were provided with IDDE education in person or via other correspondence. This education typically revolves around the key concept that "Only Rain is Allowed down the Drain" as well as local spill reporting and the City's ability to assist with clean-up of spills. In 2025, education was deemed appropriate and provided as a component of illicit discharge response in 13 incidents.

#### EDUC-6

Task Description: Inform public employees, businesses and the general public of hazards associated with illicit discharges and improper disposal of waste through handouts, posters, social media, door knockers, etc.

- Regularly interact/collaborate with colleagues in various City departments (e.g. planning, operations/maintenance, gas and water utilities, building, and administration) to discuss/educate about SWMP and Phase II permit compliance.
- Posted rotating stormwater-related information in a central location at the public works/community development building. Staff often read and discussed/commented on the postings. *FIT For A King* educational poster regarding the Green/Duwamish and Central Puget Sound Watershed is posted in City Hall.
- Continued IDDE training for all new field staff and performed refresher training for existing field staff as needed.
- Continued TESC training for all new field operations staff on proper TESC BMP implementation for various public works operations/construction work and provide refresher training on proper TESC BMP implementation for existing operations staff as needed.
- City staff routinely educated the public about stormwater in the course of field work, complaint and illicit discharge investigations, site inspections, preconstruction meetings, plan review, public meetings and other discussion opportunities.
- City staff continued implementation of the "spills happen" digital poster by posting it on the city's Facebook page and displaying it at the city booth at the Enumclaw Street Fair.
- The City Engineering Technician attended a class and became re-certified as a CESCL.
- The City Stormwater Program Manager attended several trainings during the Stormwater Awareness week including trainings on industrial stormwater inspections, asset management using CCTV inspections, How to effectively meet NPDES mapping requirements (GIS analyst also attended), stormwater management for existing development, and an information session on a regional decant facility evaluation to be performed.
- Pet waste clean-up signage and bag dispensers are installed and routinely maintained at all City parks including Boise Creek Park, Dwight Garrett Park, Ellenson Park, the Foothills Trail, Flensted Park, Holdner Park, Martin Johnson Park, McFarland Park, Montgomery Park, and the Rainier Trails Park. Parks crews are continually evaluating other green space areas throughout the city to determine if additional pet waste stations are warranted.

- Posted *FIT For A King* educational poster regarding the Green/Duwamish and Central Puget Sound Watershed habitat plans at the city's booth at the Enumclaw Street Fair. This poster seemed to draw particular interest from booth visitors at the fair. This poster is also permanently posted within City hall to help educate the various residents who enter the building.
- The City of Enumclaw hosted an Enumclaw Recycling Event at the City Expo Center which promoted residents to properly recycle and dispose of various universal and dangerous wastes (batteries, florescent bulbs, used oil, etc.) and other recyclables. In 2025, 365 carloads of recyclable material arrived to properly recycle various materials. The event resulted in collection of roughly 36,820 lbs scrap metal, 1,440 lbs of scrap wood, 7 refrigerators/freezers, 16 propane tanks, 385 gallons of used motor oil, 110 gallons of used antifreeze, 15 used oil filters, 147 used tires, 13 lead acid batteries, 6,280 household batteries, 10 mattresses, 10 toilets/sinks and much more. To encourage the use of recycled content material and more efficient use of water/resources, rain barrel's and compost bins were also advertised and sold at the event to residents at a discount rate. While not only promoting sustainable practices and protection of resources, this event helped reduce various household pollutants that may otherwise have been disposed inappropriately, contributing to pollution in the region.
- Routinely posted general stormwater awareness information on the City's Public Works Facebook page. Information was focused on pet waste management, proper car wash techniques, typical household stormwater pollutants, proper tire care, and spills reporting. Postings were also provided in the month of November through December in support of the PSSH general awareness campaign to reduce pollutants associated with car maintenance. All posts included consistent messaging from the Puget Sound Starts Here regional outreach.
- Updates are routinely made to the city's stormwater webpage as needed with new education and outreach material. The webpage includes information on cleaning up spills, washing cars, managing pet waste, spills reporting information, wastewater-stormwater facts, household pollution facts, stormwater pollution educational videos, and much more. In 2025, additional information was added regarding EPCA foothills trial riparian restoration project. Additionally, the city added a dedicated source control webpage.
- The city established their own public works booth at the Enumclaw Street Fair in 2025 and provided in-person stormwater educational and outreach information to fair attendees during all two days of this event. Education and outreach material was provided on the difference between storm sewer and sanitary sewer, pet waste facts, IDDE, spills hotline, etc. Lots of visitors commented that they liked the dog waste poster and the many visitors stopped to look at and read the green Duwamish King poster at the booth. The city's booth also includes a large stormwater banner to gain more attention to the stormwater education provided and attract more visitors.
- The city prepared an education and outreach letter on grease management and distributed it to all restaurants in the downtown corridor. The letter emphasized the importance of performing regular maintenance of grease traps, using a licensed grease hauler, educating staff on proper grease management, and keeping alleyways clean and clear of any grease. This letter was sent out to ultimately help mitigate pollution and safety issues related to improper grease management.

#### EDUC-7

Provide, partner with, or promote stewardship opportunities such as planting native plants and invasive species removal at City parks. Partner with EPCA to encourage residents to participate in volunteer water quality and other local stewardship opportunities.

- In 2025, the City worked with the Enumclaw Plateau Community Association who provides riparian planting stewardship opportunities to volunteers in Enumclaw. The city coordinated with leaders of this organization to support their ongoing riparian planting project along an unnamed tributary to Boise Creek. Assistance was provided by donating water for the plantings during hot summer months through an extension of the city water system performed in 2023, advising on grant opportunities that they may be eligible for to assist with funding additional plantings,

coordination with the drainage district to assist with clean-up along the riparian planting area, and incorporation of the stewardship project in the annual beautify Enumclaw Event. In 2025, the city acquired a design and contracted for a temporary irrigation system to be installed within a large portion of the restoration site area. Furthermore, the City provided equipment and staff to perform invasive species vegetation management in a portion of the riparian restoration area to help ensure survival of the native plants installed. City staff also worked with EPCA to support a stewardship event with Free the Green at the site for community members to perform invasive species work and plant new riparian vegetation.

# **Regional Dumpster Lid Campaign Strategy, Schedule, and Evaluation**

(Last Updated 06.27.2025)

## Campaign Background, Purpose and Focus

Puget Sound is in trouble. Toxic runoff causes aquatic habitat damage, putting many of our indigenous aquatic species at risk. Most of the pollution reaching Puget Sound comes from polluted stormwater runoff. The purpose of this plan is to protect water quality in Puget Sound and local waterways by reducing sources of pollution. The focus is on increasing adoption of dumpster area best management practices (BMPs) by businesses, to prevent water quality violations. This social marketing plan provides valuable information about the priority audience desired benefits, barriers and motivators and tools that will work to promote positive behaviors for the benefit of the Puget Sound Watershed.

## Situational Analysis

### ***Strengths:***

- **Multi-jurisdictional collaboration and support.**
- **Internal and regional funding availability.**
- **Internal and regional expertise. Previous work on this topic has been conducted in the US and in the Puget Sound region.**
- **Management support (NPDES Permit mandate.)**
- **Aligns with other NPDES permit mandate to implement a Source control Program for existing Development.**
- **Recent experience working on successful regional social marketing campaigns, such as Natural Lawn Care and Don't Drip and Drive.**
- **Strong pathways for communication with haulers and share common goals.**

### ***Weaknesses:***

- **Jurisdictions experiencing budget shortfalls, resulting in budget cuts across all departments.**
- **Inability for a local business to fully control any contributing factors from the hauler.**
- **Image of City being a regulator/enforcer not willing to work with public.**

### ***Opportunities:***

- **Water quality is a top priority for the community.**
- **Lessons learned from previous programs.**
- **Visibility and resources from a regional program to increase awareness and concern about the issue and influence social norms.**

### ***Threats:***

- **Not a priority for businesses trying to manager other more important source control issues at their site.**
- **Business community may not be aware of problems.**

- **High staff turnover in certain business sectors.**
- **May be hard to collect data on behavior change.**
- **Multiple languages to consider in certain sectors.**
- **Changes may require financial resources/incentives.**

### Research and Review of Prior Similar Efforts

Prior to the initial Dumpster Summit by various municipalities, research was conducted to assess the impact of dumpster issues on local water quality. This research includes:

- Qualitative information/observations from local government experts and consultants conducting business and local source control inspections, including members of the Business Inspection Group (BIG)
- Qualitative information/observations from private stormwater facilities inspectors conducting site visits at commercial businesses (associated with permit required inspections)
- Qualitative information from waste resources/solid waste experts
- Literature review of previous dumpster research and outreach efforts conducted:
  - The City of Bothell - *Dumpster Maintenance Assessment Final Report Prepared Dec. 21, 2016*
  - City of Bellevue - *Bel-Red/Northrup Commercial Waste Audit – 2017*
  - City of Federal Way - *Trash Compactors and Dumpsters: Eliminating a Major Source of Stormwater Pollution*
- Dumpster audit data collected and aggregated from six jurisdictions. Audits inspected 451 total dumpsters. Lid status information was collected from 373 dumpsters, container leaking/damaged information was collected from 391 dumpsters, and a dumpster site condition rating was given to 147 dumpsters in Bellevue and Sammamish (2015 – 2019). To view the Baseline Dumpster Data Summary, see *Appendix A*

#### *Other qualitative information:*

- Business Inspectors interviewed emphasized that a multi-tier approach that combines a helpful educational intent with a layer of enforcement was the most effective way to create behavior change within the business community.
- Understanding how to establish trust is fundamental. Approaching businesses with educational tools and resource assistance is important. Experience shows that explaining why something matters, and the potential consequences, is far more effective than simply telling a business, they must do something. Also, “selling” source control as a good business practice can increase the businesses’ desire to learn more. Once a business agrees to participate in the program, specialists need to provide value to the business to establish credibility (T. Benson 2016, personal communication, Jul. 28.)
- Having a more extensive educational campaign with a region or sector-wide reach would help to increase the business inspection program’s effectiveness (A. Alfred, A. Peterson, and T. Zuehl, 2016, personal communication, Jul. 28.)
- Challenges cited by both Snohomish and Bothell include identifying which businesses to visit and locating problems. Often, businesses do not realize there may be a problem and might not seek assistance without the specialist pinpointing a problem.

## Campaign Strategy Development

From September 2020 through October 2020, 20+ Stormwater Outreach for Regional Municipalities (STORM) member jurisdictions participated in a “Dumpster Summit.” The Summit was funded by the City of Bellevue and facilitated by social marketing expert Nancy Lee. Participating jurisdictions were supported by project lead Laurie Deveraux and a core planning team. Summit participants brought together expertise in stormwater outreach, social marketing, waste resources, and business inspections. During the Summit, participants actively developed five different social marketing strategy teams addressing dumpster area best management practices (BMPs). In between the second and third Summit, participants collected barriers, benefits, and motivator surveys at businesses and multi-family properties. At the conclusions of the Summit, participants agreed to focus on one strategy to implement: closing dumpster lids every time for commercial businesses. Through this effort, participants employed the Social Marketing 10 Step Strategic Planning Model. Step details are outlined below in the *Social Marketing Strategy and Schedule Summary* section of this document.

The Summit's primary goal was to collaboratively develop a Social Marketing behavior change campaign to be implemented regionally by jurisdictional partners across Western Washington. The ultimate outcome of this collaboration is to reduce stormwater pollution to surface waters through social marketing methods that motivate commercial businesses within the NPDES geographic area to keep dumpster lids closed. To view the Dumpster Summit 2020 summary, see *Appendix B*.

## Toolkit Development

With many different populations and needs across the NPDES geographic area, the Dumpster Summit Team and the consultant brainstormed a basic toolkit and options for jurisdictions to employ based on budget and commercial business needs. The toolkit was developed and finalized during November 2020 and December 2020. Summary of the toolkit development and testing strategy:

- Review draft toolkit and provide recommended costs/rankings
- Survey Dumpster Summit Team on recommended toolkit items
- Analyze toolkit survey results
- Finalize basic toolkit and toolkit options based on Dumpster Summit Team survey
- Create toolkit collateral materials
- Finalize toolkit collateral materials
- Manage group ordering and distribution of toolkit items

Once the toolkit material concepts are created, the consultant’s Market Intelligence Team will conduct qualitative research through online focus groups to determine which sign and slogan resonates best amongst commercial business dumpster users. The Market Intelligence Team will analyze the users’ responses to inform the final sign and slogan. Once the toolkit is finalized, the consultant will work with the Dumpster Outreach Group (DOG) to plan the 2021 pilot, including timeline development and recommendations for evaluation and implementation. To see toolkit items and tiers, see *Appendix C*.

## Regional Implementation

This campaign is designed to be broadly applicable across the region. Participating jurisdictions will be required to implement the basic toolkit package. There are optional toolkit items for jurisdictions wishing to use them as add-ons to the basic toolkit. Basic toolkit items will be tested for effectiveness

through traditional social marketing methods through a pilot campaign implementation and evaluation. Partner jurisdictions will be required to participate in a campaign launch meeting to ensure consistent pilot phase implementation and evaluation. Benefits of collaboration and regional implementation include:

- Dumpster lid issues will be elevated regionally across the business community simultaneously
- Social norming and social diffusion of dumpster BMPs will increase behavior adoption regionally
- Products of the campaign will be shared with jurisdictions implementing business inspection and local source control programs to increase BMP adoption
- Lessons learned during the pilot, and full implementation phases will be shared through intermittent check-in meetings and campaign evaluation

During and after the campaign, jurisdictions that participate in the campaign will be asked to track their activities and provide input on the pilot campaign to inform the project evaluation and a long-term implementation plan.

#### Local Relevancy of the Dumpster Lid Issue

As with most City's, stormwater pollution from improper management of dumpsters is an issue within the City of Enumclaw. The regional baseline data provided in Appendix A identifies that roughly 30% of businesses have dumpster related issues (open lids, leaks, etc.). City Code enforcement and stormwater staff have several documented pollution issues at various dumpsters around town which have resulted in contaminants entering the MS4 and ultimately the downstream receiving waters. Businesses with open dumpster lids were significantly more likely to have other water quality concerns than those with closed lids presumably due to lack of source control BMP's (See Appendix A). This is especially important with upcoming permit required source control BMP implementation requirements. Promotion of dumpster related source control BMPs will not only help businesses reduce pollution but also help them comply with these future source control BMP requirements.

There is currently a Bacteria TMDL for the Puyallup-White River in which the City of Enumclaw is tasked under the Phase II Municipal Stormwater Permit requirements with finding and eliminating potential sources. Bacteria and other pathogens are often found at dumpsters areas. Dumpsters lids left open (or leaky dumpsters) can lead to increased pest issues (birds, rats, etc.) subsequent bacteria loading around the dumpster areas from those pests. Even the garbage itself, depending upon the source) can have elevated bacteria levels present. With this in mind, honing in on and eliminating this potential bacteria source within the City's MS4 further emphasizes the relevance of proper dumpster management with the City.

Often times, dumpsters are treated as out of site out of mind. They are hidden in alleys, behind buildings, within fences and walls, and other places where their uncleanliness does not detract potential customers. When there is a pollution problem at a dumpster it typically does not jump out at most people because the pollution can be hidden and all too often deemed normal or acceptable. The City has joined the Dumpster Lid Campaign to help elevate this hidden problem to the surface in an attempt to promote positive change and ultimately improve water quality based on observations of pollution generating activity. The City has a unique aspect in implementing this campaign in that they operate their own solid waste division. This will allow us to better observe and track implementation of the campaign and provide for a mechanism to better train our crews to look for not only dumpster lid issues but also other stormwater pollution BMP issues common around dumpsters.

*City of Enumclaw Baseline Data* (see *Appendix A* regarding # of dumpsters observed and # of open lids at certain business types in the regional baseline data). A similar baseline will be collected within the City prior to full implementation of the campaign. Preliminary pilot evaluation (results identified below) generally conform to the regional survey results and as such confirm campaign relevancy for the City of Enumclaw. Preliminary data is identified as follows:

- a.** Windshield surveys (condition assessment and identify target businesses)
  - i.** The City collected baseline data from a windshield survey conducted on 1/22/2021. Results were as follows:
    1. In general, grocery stores and multi-business sites (strip malls) in town seemed to be the worst areas during the initial window survey. This includes both Grocery Outlet and QFC shopping complex.
    2. Subway
    3. 7-Eleven
    4. Aspen Glade Apartments
    5. Pita's dumpster was observed open as seen on google street view.
    6. One dumpster between griffin and Initial in alley (dumpster was full)
    7. One dumpster between Griffin and Myrtle Ave behind The Mint.
    8. Several cardboard recycling dumpster lids were left open (approx. 5).
    9. Most dumpsters around town were kept closed and in good shape. This could be because the typical smaller 1.5yd size makes closing lids easier.
    10. At least 3 dumpster lids were only left open slightly because they were full and the lid could not be closed. Note, during the pandemic, the City has allowed businesses to scale back their regular pick-ups as needed due to reduced business and subsequent garbage (this is especially the case at restaurants). Irregular pick-ups and business is a likely contributor to full dumpsters.
    11. The garbage compactors behind QFC and Rite Aid are leaking liquids currently and property owners contacted accordingly.
- b.** Review of complaints to the city (e.g., from a neighbor) or IDDE reports
  - i.** City Code enforcement identified several "problem" dumpster areas
    1. The Chevron on Porter, and Pita's at 1547 McHugh
    2. The alley between Griffin and Myrtle
    3. The alley between Initial and Griffin Ave
    4. The alley behind 1921 Cole St
- c.** Interview waste management company servicing businesses
  - i.** The City operates its own solid waste utility and performs garbage collection for dumpsters up to 1.5 cubic yards. While there are a few larger dumpsters managed by outside vendors within the City, most dumpsters are managed by the City
  - ii.** In discussing with City operations staff, the dumpster outside of Seeders restaurant and bar as well as Subway was identified as a problem dumpster. During full implementation the city may have solid waste drivers start to track lid management at city operated dumpsters as a means to determine which businesses to implement the campaign and evaluate effectiveness of the campaign.

### Dumpster Campaign Participation

Prior to the Dumpster Lid Outreach Campaign, the City of Enumclaw has not previously had any dumpster outreach efforts related to stormwater pollution besides various complaint-based enforcement measures. The City of Enumclaw is a small municipality that does not have resources available to implement a large standalone campaign (especially with its fairly new stormwater utility) and typically relies upon outside support/collaboration. As such joining in on this regional campaign effort is very practical to both reduce pollution and fulfill permit requirements.

The City will engage with Dumpster Outreach Group and development of the dumpster campaign through email correspondence, attending training meetings, baseline field survey data collection and evaluation, and pilot campaign implementation and evaluation (including purchase of any required outreach material needed). The city will continue to collaborate with the Dumpster Lid Outreach Campaign regional group through attendance of quarterly meetings. The current toolkit of this campaign will be updated as deemed necessary.

### Initial Campaign Pilot Implementation

The campaign will be implemented in the City of Enumclaw by the Stormwater Utility. Due to the Bacterial TMDL, at least initially, an emphasis will be placed on dumpsters within the Boise Creek drainage basin (Puyallup- White) which consists of roughly half the city. Two businesses identified in initial data collection will be chosen to implement the pilot phase. The pilot phase will start April 1<sup>st</sup> and run through the end of 2021. After completion of the baseline survey (before outreach performed), at least two businesses were identified and selected for the pilot campaign. Outreach was performed with these businesses (including an in-person meeting and providing tier 1 campaign tools) and then an initial daily inspection was performed of their dumpsters as part of the campaign start evaluation. A final evaluation was performed of these same businesses 6 months after implementation of the social marketing strategy and tools. This information was used to perform the pilot phase evaluation. Additional implementation information will be added to this report at the conclusion of the Pilot campaign including how many businesses, toolkit items implemented, duration, and evaluation elements. See Attached Pilot Phase Implementation schedule and evaluation form.

### Pilot Phase Evaluation

An evaluation which summarizes the pilot campaign results and lessons learned which could improve broad-scale implementation was performed in early 2022 and are available in a separate report. The evaluation results were aggregated based on information provided by all participating jurisdictions. Results of the pilot campaign showed that dumpster lid closure significantly improved from campaign outreach. The regional percentage of lids closed rose from 49% during the baseline evaluation to 77% during the final evaluation. Specific to the City of Enumclaw, lid closure rose from 60% up to 87% with the campaign between the baseline and final evaluation.

### Full Campaign Strategy Implementation

With success shown in the pilot phase of this campaign and associated source control requirements for existing businesses, the city decided to continue broad-scale implementation of the campaign starting in 2023. The city incorporated this behavior change outreach campaign into our source control business inspection program which started conducting routine inspections at potential pollution generating businesses in January 2023. Implementation of this campaign into the city's solid waste program was also considered but ultimately the city decided to instead first focus on implementation during source control

inspections. The original general concept behind implementation in both the solid waste program and two areas is as follows:

- While not currently implemented in the solid waste program currently, businesses which have commercial dumpsters that are served by the City of Enumclaw solid waste division (this includes most dumpsters in the city limits) could be monitored at least monthly for closure of their dumpster lids by garbage truck drivers. Monitoring would be performed and tracked through the city's asset management program Cartegraph. Businesses with observed routine issues with keeping dumpster lids closed would then be offered this behavior change outreach campaign in an effort to help improve their closure rate. Dumpsters for which lids are unable to close due to excess garbage build-up would not be tracked for implementation but instead be charged for the extra garbage and required to increase frequency of garbage pick-ups per the city solid waste utility policies if identified as a routine problem.
- Starting in 2023, per 2019 Stormwater Permit requirements, the city updated its municipal code requiring source control BMPs be utilized throughout the city. Required operational source control BMP's for all businesses included good housekeeping including keeping dumpster lids closed. 42 businesses (prioritized by pollution potential and valid complaints) on the City's potential pollutant generating businesses list were inspected in 2023 to confirm appropriate BMP's are in place and being utilized. The dumpster lid behavior change outreach campaign was included at all businesses inspected which utilize a dumpster in-lieu of only businesses with observed dumpster deficiencies because inspectors were already onsite and there is always room for a site to increase its dumpster lid closure rate even if closed at time of the inspection. Source control inspections were tracked through the City's asset management software Cartegraph. Implementation of this behavior change campaign as a component of the source control inspection program was thought to not only help businesses comply with operational source control requirements, but also ultimately help reduce pollutants from entering surface waters in the Enumclaw and the surrounding region.

The education sticker and in-person visits were implemented in the broad scale campaign per the campaign implementation strategy recommendations identified in the Pilot Phase Evaluation report. Costs to produce stickers and apply on the dumpsters were paid for by the city to help improve the overall efficiency of the campaign goals and help insure proper installation of the material. Evaluation of the behavior change was performed during broad scale implementation to generally determine if this strategy worked as well as it did during the pilot phase. The dumpster lid campaign implementation strategy was adapted as deemed appropriate or recommended by the regional group throughout the campaign and a final evaluation performed at the close of the campaign in 2024.

### Full Campaign Implementation Evaluation

1. A summary of how the dumpster lid campaign was incorporated into the City of Enumclaw's business source control inspection program is below:
  - **Identification of the Need.** Through the pilot study, the City of Enumclaw recognized the importance of educating businesses on proper dumpster lid

closure to prevent pollutants from entering the MS4 and ultimately local surface waters. As such, the pilot dumpster lid campaign was implemented on a full scale within the city. To implement the full campaign, the city determined that it would be much more efficient to incorporate dumpster lid outreach into the permit required source control inspection as opposed to implementing separately. This ultimately led to much more dumpster outreach being performed within the city.

- **Continued Regional Collaboration.** Staff continued to collaborate with the regional dumpster lid group to understand challenges, lessons learned, and align our efforts with the groups objectives and messaging. This included incorporation of improved campaign created outreach dumpster stickers with increased graphic size, a universal dumpster image, and incorporation of human participation for clearer messaging.
- **Training Awareness.** As a component of the campaign the City conducted outreach for staff members responsible for source control inspections to educate them about the significance of proper dumpster lid management and how to incorporate outreach efforts within a sites overall source control inspection.
- **Technology Integration.** Incorporated campaign specific metrics into the source control inspection form developed within Cartegraph, the City's asset management software. This was important for campaign tracking and reporting. It also allowed us to more efficiently monitor trends to allow for adaptive management when needed.
- **Trust but Verify.** In the pilot study, over 30 jurisdictions collected data on more than 12,000 dumpsters which identified that the campaign can produce more than a 25% increase in lid closure rate (up to 77%). With this robust amount of data, the city decided not to monitor all dumpsters for which outreach was performed. Instead, inspection staff performed follow-up monitoring only at sites that required a follow-up source control inspection. Not surprisingly, the dumpster lid closure rates in the full campaign were determined to be consistent with that experienced under the pilot campaign.

By following these steps, the City was able to provide much more efficient Dumpster Lid Campaign outreach which ultimately improved the extents of outreach performed which should correlate with a reduced the amount of pollutants entering surface waters from dumpsters.

2. Dumpster lid outreach was performed in conjunction with business source control inspections across the city at 42 businesses inspected which utilize a dumpster. Businesses with clear dumpster deficiencies based on inspection were provided with additional outreach to help improve behavior change and that the results of the efforts were consistent with that experienced during the pilot program. Follow-up monitoring was only performed at businesses which required a follow-up source control inspection. The dumpster lid closure rate for the full-scale program closely mimicked that experienced during the pilot phase with an improvement in dumpster lid closure rate of 25%. The following provides a general evaluation based on business category for which dumpster outreach was performed during source control inspection:

- **Automotive Related Businesses:** Many of the sites have large dumpsters for scrap metal, tires, etc. Many of these large dumpsters did not have a cover available on them. As such, the business requested that the vendor replace the dumpster with one which has a lid that can be cranked open when in use.
- **Pet Care and Commercial Animal Handling:** In general, all waste goes into garbage and any liquids are properly discharged to the sanitary sewer. No issues with keeping dumpster lids closed was observed at any of these business types. This might be due to the nature of the waste being disposed in the dumpster and smells it can exhibit.
- **Food Related Businesses:** Exhibited the most issues with dumpster cleanliness and keeping dumpster lids closed. Some food related businesses experience overflow of garbage which did not allow them to close the lid properly. This is likely due to the variability in business, and subsequently garbage, that is experienced from season to season. Lack of planning and efforts to keep down on disposal cost are typical root causes to overflowing dumpsters. The city's solid waste division has begun tracking overflow issues recently so that additional charges are applied for the excess garbage. Businesses with routine dumpster overflow issues are referred to administration which try to work with customers to increase their dumpster size or pick-up frequency. This along with future fee increases for overflows are both thought to likely reduce the amount of overflows that are experienced.
- **Gas Stations:** About half of the gas stations inspected had issues with keeping dumpster lids closed. Those same sites generally had observed issues with housekeeping around the dumpster as well. Outreach was shown to significantly improve the dumpster lid closure rate and housekeeping at these sites.

Ultimately, as a part of this regional general awareness campaign effort we were able to provide far more reach around the region and in our jurisdiction. The dumpster outreach Campaign information was also incorporated onto the Washington Stormwater Center Website located here:

<https://www.wastormwatercenter.org/permit-assistance/municipal/dumpster-outreach-group/>.

3. In review of the dumpster lid behavior change campaign, The city believes there are some changes to the campaign that could result in improved effectiveness in the future. A discussion of recommended changes and strategies to implement those changes are as follows:

- **Community Engagement/Education:** Incorporation of further dumpster and dumpster lid closure education and outreach can be incorporated into the various stormwater education/outreach efforts already being performed such as the annual street fair, online social marketing, and other community events. Attention grabbing posters, handouts, games, or other props (such as a full-scale dumpster) at in person events could increase behavior change by raising better awareness among businesses and residents about the importance of proper lid

closure and dumpster housekeeping. Residents might also respond better if waste haulers were included in outreach efforts. This would allow for a firsthand account of the issues it causes a waste hauler when dumpsters are overflowing and a hauler has to pause their route to clean up waste for the business. Ultimately, this results not only in pollution to stormwater but also to level of service reduction to other customers as it can add a significant amount of time to the route.

- **Enhanced Enforcement Discussion:** Some businesses unfortunately will not change bad behavior unless there is a monetary penalty that will come from such behavior. Often times, dumpster lid and housekeeping issues around dumpsters are not typically referred to code enforcement unless a severe violation is observed (i.e. illicit discharge). With further roll-out of the source control inspection program, clearer communication of potential monetary consequences for routine dumpster mismanagement could be incorporated into outreach efforts to ensure businesses are aware that monetary penalty is possible. This discussion would have to be delicately balanced to ensure other outreach efforts are not accidentally diluted.
- **Local Business Collaboration:** In locations with shared dumpster areas such as alley ways or multi-use sites, it can just take one business who does not manage their waste properly to dilute action by other business to keep dumpster areas clean and lids closed. And often times, direct communication between businesses is lacking. Establishing a network of businesses within an area that are committed to maintaining closed dumpster lids and good housekeeping could magnify outreach efforts and put pressure on any non-conforming businesses to keep lids closed and areas clean. Collaboration could be established through coordination of a meeting among all the business owners to discuss concerns/issues and collaborate on solutions to keeping dumpster lids closed and shared dumpster areas clean.
- **Securing/locking dumpster Lids:** Some businesses reported problems with vagrants leaving dumpster lids open and creating housekeeping issues around the dumpster. Addition of locks to those dumpsters, when possible, would assist with reducing this issue but it does bring about potential issues with inaccessibility by the waste hauler if not-unlocked prior to pick-up. Coordination of locking dumpsters will need to be further assessed with the waste hauler before this corrective action is promoted to businesses.
- **Incorporation Into Solid Waste Program:** Incorporation of dumpster lid outreach into the City Solid Waste program would allow for more routine monitoring of commercial dumpster lid closures and would allow for more widespread implementation within the city. Businesses who have a track record of leaving dumpster lids open and/or related housekeeping issues could be referred to the city stormwater source control inspector to perform a follow-up inspection and dumpster outreach accordingly. Integration of the dumpster lid campaign into the solid waste program would have to be further evaluated to determine what barriers may exist and that it does not significantly slow down driver pick-up times or impede other core functions of the solid waste division.

- **Dumpster Sizing and Pick-Up Intervals:** Some businesses were unable to close their dumpster lid due to excess garbage. This is most commonly found with food related businesses which have seasonal variability in the amount of customers and subsequently the amount of garbage they must dispose. Failure to plan accordingly and schedule additional pick-ups can result in times of excess garbage and subsequent inability to close dumpster lids. The city's solid waste division has begun tracking overflow issues recently and properly applying additional charges to monthly bills for the excess garbage. Also, businesses with routine dumpster overflow issues are referred to the solid waste administration staff which try to work with customers to increase their dumpster size or pick-up frequency. Even with these changes, the current fee for overflow garbage disposal does not appear to be sufficient for some businesses to warrant the extra cost with having an additional pick-up date or dumpster size. As such, it is thought that an evaluation of the overflow/excess garbage fee should be performed to determine if an increase in these fees is warranted to reduce the amount of overflows and burden on solid waste staff to pick-up the overflow garbage. This would ultimately increase dumpster lid closure rates and reduce the amount of dumpster related pollution that is entering local receiving waters. Incorporation into the City Solid Waste program would allow for more routine monitoring of commercial dumpster lid closures and could allow for more widespread implementation within the city. This would require approval by the solid waste division.

#### 2025 Expansion to New Target Audience – Multifamily Residential

1. In-lieu of implementation of the various strategies identified above to help improve the effectiveness of the current campaign, the City determined that there would be more pollution reduction benefits realized through expansion of the campaign to a new target audience. This is primarily due to the need identified at multi-family residential properties (specifically apartment complexes). This need was initially identified during the 2021 pilot study of the program in which an apartment complex in town was observed experiencing re-occurring issues keeping their dumpster lids closed. However, the city chose to first focus campaign implementation at commercial businesses due to issues experienced at various commercial establishments throughout the city and the impending source control inspection program implementation in which the behavior change campaign could be incorporated into.

With the success experienced with incorporation of the dumpster lid campaign for commercial business into the business source control inspection program, the city will again incorporate the dumpster lid campaign for multifamily residential properties into its source control program. This will be accomplished by first identifying all of the apartment complexes within the city, gathering applicable information of those properties, and adding that data to our source control business inspection list. After the list has been updated, those properties will be added to the source control layer in Cartegraph for which source control inspections are conducted and tracked. While the

campaign will primarily be implemented to property manager/owner, the city will coordinate with those individuals to send campaign information out to their tenants in addition to the stickers which will be added to their dumpsters.

As is consistent with the source control inspection program, the campaign will be implemented at all apartment complexes in which a credible complaint identifies source control issues at the site. Additionally, the source control inspection program will prioritize performing inspections at apartment complexes to ensure the dumpster lid campaign is implemented at several locations during the current permit cycle. Incorporation of the dumpster lid campaign into this new target audience of multi-family apartment complexes will be completed prior to September 1, 2025.

# Dumpster Behavior Change Campaign



## Implementation Timeline Summary



|   | Complete by      | Task   |
|---|------------------|--|
| ✓ | 6/2020           | Collect data on dumpster area conditions and water quality issues (Step 1 Community Based Social Marketing)  |
| ✓ | 11/2020          | Dumpster Summit Implementation, audience barriers, benefits, and motivators research, audience profile research (Steps 1-3 Community Based social marketing)   |
| ✓ | 1/15/2021        | Finalize "Strategy and Schedule" documentation (Step 3 Community Based Social Marketing)   |
| ✓ | 1/15/2021        | Begin toolkit items development ahead of pilot implementation  |
| ✓ | 4/1/2021         | Begin implementing developed strategy (Pilot Campaign Phase, Step 4 Community Based Social Marketing)  |
| ✓ | 1/2022           | Evaluate Pilot Campaign and make strategy adjustments to improve outcomes (Step 4 Community Based Social Marketing)  |
| ✓ | 2/2022           | Implement campaign strategy broadly (Step 5 Community Based Social Marketing)  |
| ✓ | 2/2024           | Compile and document campaign effectiveness data (Step 5 Community Based Social Marketing)   |
| ✓ | 3/31/2024        | Finalize report documenting the changes in understanding and adoption of targeted behaviors resulting from the implementation of the strategy. Include planned or recommended changes to the campaign in order to be more effective. Describe the strategies and process to achieve the results. |
| ☐ | 4/1/2024-Ongoing | Use results of the evaluation to continue to direct effective methods and implementation of the ongoing behavior change program.   |

## Social Marketing Strategy and Schedule Summary:

|                    |   |
|--------------------|---|
|                    |   |
| PURPOSE            | Reduce stormwater pollution to surface waters   |
| FOCUS              | Dumpster Lids   |
|                    |   |
| PRIORITY AUDIENCE  | Commercial businesses within the NPDES geographic area not closing lids   |
|                    |   |
| BEHAVIOR           | Close dumpster lids every time something is put in the dumpster   |
| AUDIENCE INSIGHTS  |   |
| BARRIERS           | <ul style="list-style-type: none"> <li>• Full so can't close</li> <li>• Can't reach</li> <li>• Heavy</li> <li>• Didn't think about it</li> </ul>  |
| BENEFITS           | <ul style="list-style-type: none"> <li>• Reduce pests</li> <li>• Reduce smell</li> <li>• Reduce illegal use</li> <li>• Cleaner look</li> <li>• Keep rain out</li> </ul>   |
| MOTIVATORS         | <ul style="list-style-type: none"> <li>• Reduce pests</li> <li>• It's against the law</li> <li>• Point out pollution</li> <li>• Reminder to close the lid</li> <li>• Items to make it easier (e.g., stool, hook, handle)</li> </ul> |
| COMPETITION        | <ul style="list-style-type: none"> <li>• Not closing the lid               <ul style="list-style-type: none"> <li>• Easier</li> <li>• Saves time</li> </ul> </li> </ul>   |
| INFLUENTIAL OTHERS | <ul style="list-style-type: none"> <li>• Property Owners/Managers</li> <li>• City Inspectors</li> <li>• Neighbors</li> </ul>  |
|                    |   |
| POSITIONING        | We want businesses to see closing lids on dumpsters every time as a simple way to reduce illegal use, be compliant with regulations and have pest and odor-free dumpster areas that are clean for them and the environment.         |

| INTERVENTION STRATEGIES (4Ps)   |  |
|---|--|
| PRODUCT   |  |
| <ul style="list-style-type: none"> <li>• Core</li> </ul>                      | <ul style="list-style-type: none"> <li>• Pest and odor-free dumpster areas</li> </ul>  |
| <ul style="list-style-type: none"> <li>• Actual</li> </ul>                    | <ul style="list-style-type: none"> <li>• Permanent Signage and Stickers</li> <li>• Inspector Reports</li> </ul>  |
| <ul style="list-style-type: none"> <li>• Augmented</li> </ul>                 | <ul style="list-style-type: none"> <li>• Step Stools</li> <li>• Tool for Lids</li> <li>• Consulting</li> <li>• Box Cutter</li> </ul>   |
| PRICE   |  |
| <ul style="list-style-type: none"> <li>• Monetary Incentives</li> </ul>       | <ul style="list-style-type: none"> <li>• Free stepstool</li> <li>• Free month for best behavior</li> <li>• Maybe free or discounted lid tool</li> </ul>  |
| <ul style="list-style-type: none"> <li>• Monetary Disincentives</li> </ul>    | <ul style="list-style-type: none"> <li>• Code enforcement</li> <li>• Cost to dispose of illegal dumping</li> <li>• Staff having to clean up or pay someone to do the cleaning, storm drain vactored</li> </ul>                               |
| <ul style="list-style-type: none"> <li>• Nonmonetary Incentives</li> </ul>    | <ul style="list-style-type: none"> <li>• Pledges</li> <li>• Window stickers</li> <li>• Rewards (e.g., chocolate fish)</li> </ul>   |
| <ul style="list-style-type: none"> <li>• Nonmonetary Disincentives</li> </ul> | <ul style="list-style-type: none"> <li>• Reminder letter for those not following behavior</li> <li>• Photos of unclosed lids</li> </ul>  |
| PLACE   |  |
| Tangible Goods  | <ul style="list-style-type: none"> <li>• Dumpster locations</li> <li>• At the start of the campaign site visit</li> <li>• Station</li> </ul>   |
| Services  | <ul style="list-style-type: none"> <li>• By appointment on site</li> </ul>   |
| PROMOTION   |  |
| <ul style="list-style-type: none"> <li>• Messages</li> </ul>                  | <ul style="list-style-type: none"> <li>• Cleaner, less odors, fewer pests</li> <li>• Worthwhile</li> <li>• Multiple languages</li> </ul>   |
| <ul style="list-style-type: none"> <li>• Messengers</li> </ul>                | <ul style="list-style-type: none"> <li>• City staff</li> <li>• Property managers</li> </ul>  |
| <ul style="list-style-type: none"> <li>• Creative Elements</li> </ul>         | <ul style="list-style-type: none"> <li>• “Drop, Cover &amp; Stroll!”</li> <li>• “Close the Lid on Pollution, Pests, Odors”</li> </ul>  |
| <ul style="list-style-type: none"> <li>• Media Channels</li> </ul>            | <ul style="list-style-type: none"> <li>• On dumpster, at site</li> <li>• Pavement around dumpster</li> <li>• Public recognition (e.g., social media)</li> <li>• Chamber of Commerce</li> <li>• Door/area leading to dumpster site</li> </ul> |
| MONITORING AND EVALUATION   |  |

|  |  |
|--|--|
| <ul style="list-style-type: none"> <li>Inputs Measured</li> </ul>              | <ul style="list-style-type: none"> <li>Staff time</li> <li>Money spent for tool kit materials</li> <li>Partner contributions</li> <li>Consultant expenses</li> </ul>   |
| <ul style="list-style-type: none"> <li>Outputs Measured</li> </ul>             | <ul style="list-style-type: none"> <li>Number of site visits/businesses</li> <li>Materials disseminated</li> <li>Materials posted/put in place</li> <li>Implementation of program elements. (on track? on budget?)</li> </ul>  |
| <ul style="list-style-type: none"> <li>Outcomes Measured</li> </ul>            | <ul style="list-style-type: none"> <li>Behavior adoption</li> <li>Change in knowledge and beliefs, campaign awareness</li> <li>Support and satisfaction with outreach</li> <li>New partnerships and contributions gained</li> </ul>  |
| <ul style="list-style-type: none"> <li>Impacts Measured</li> </ul>             | <ul style="list-style-type: none"> <li>Cleaner dumpster areas, reduced odors, and vermin</li> <li>Cleaner appearance in downtown and commercial areas, impacting economic development health</li> <li></li> </ul>  |
| <ul style="list-style-type: none"> <li>Techniques and Methodologies</li> </ul> | <ul style="list-style-type: none"> <li>Minimum of three groups to conduct pilot comparing different toolkit tiers.</li> <li>Implementer to assign participant groups.</li> <li>Observation, audience surveys, and interviews (quantitative.)</li> <li>Calculate ROI.</li> </ul>                      |
| <ul style="list-style-type: none"> <li>Evaluation Timing</li> </ul>            | <ul style="list-style-type: none"> <li>Pre, mid-term, and post outreach (observations of dumpster lids/areas.)</li> </ul>  |
| <ul style="list-style-type: none"> <li>Evaluation Costs</li> </ul>             | <ul style="list-style-type: none"> <li>Expected cost efficiencies by joining with partner jurisdictions to share costs for consultant work and material production</li> <li>Use the 10% rule of thumb for any consultant evaluation work</li> <li>Observations will be conducted by staff</li> </ul> |
| <b>BUDGETING &amp; FUNDING</b>   |  |
| <ul style="list-style-type: none"> <li>Product-Related Costs</li> </ul>        | <ul style="list-style-type: none"> <li>Indirect costs for staff time to conduct technical assistance site visits, waste audits</li> <li>Direct costs for “tools” signage and stickers</li> </ul>   |
| <ul style="list-style-type: none"> <li>Price Related Costs</li> </ul>          | <ul style="list-style-type: none"> <li>Recognition items like the window stickers (clings) “we keep it clean” or other incentives like free months service for best behavior</li> </ul>  |
| <ul style="list-style-type: none"> <li>Place Related Costs</li> </ul>          | <ul style="list-style-type: none"> <li>Costs related to the distribution of resources, such as a webpage</li> </ul>  |
| <ul style="list-style-type: none"> <li>Promotion Related Costs</li> </ul>      | <ul style="list-style-type: none"> <li>Costs for incentivizing trusted messengers or influencers</li> </ul>  |
| <ul style="list-style-type: none"> <li>Evaluation Related Costs</li> </ul>     | <ul style="list-style-type: none"> <li>Costs for analyzing pilot data</li> <li>Fees for making program recommendations (consultant)</li> </ul>   |

|   |  |
|---|--|
| <ul style="list-style-type: none"> <li>• Potential Funding Sources</li> </ul> | <ul style="list-style-type: none"> <li>• The coalition of local jurisdictions and other stormwater partners.</li> <li>• Partners in Waste Reduction &amp; Recycling</li> <li>• State grant dollars available through salmon recovery funds</li> <li>• Consider appropriate corporate partners/sponsors like REI, local breweries that rely on clean water for their production process, or local shellfish/seafood producers (like Penn Cove or Taylor Shellfish)</li> </ul> |
|---|--|

IMPLEMENTATION PLAN-

| WHAT   | WHO   | WHEN                  |
|--|---|-----------------------|
| Baseline Dumpster Data Collected and summarized  | Jurisdictions   | 2018-2020             |
| Project coordination and oversight   | Core Planning Team/Consultant   | Feb. 2020 – Mar. 2024 |
| Dumpster Summit Implementation, a summary of audience research and social marketing plan | Laurie Deveraux, Nancy Lee, Core Planning Team, Participating Jurisdictions | Sept-Nov. 2020        |
| Toolkit development & costs  | Consultant  | December 2020         |
| Develop a campaign strategy and schedule document  | Core Planning Team/Consultant   | Early January 2021    |
| Finalize list of participating partners  | Core Planning Team  | February 2021         |
| Finalize basic partner toolkit   | Core Planning Team/Consultant   | Mar. 1 2021           |
| Creative campaign concept  | Consultant  | January 2021          |
| Message testing  | Consultant  | February 2021         |
| Develop Pilot Phase, selection of pilot sites, implementation and evaluation plan        | Core Planning Team/Consultant   | February 2021         |
| Finalize partner toolkit, signage stickers, handouts, pledges, and clings                | Core planning Team/Consultant   | Mar. 1 2021           |
| Toolkit material ordering and production   | Consultant  | March 2021            |
| Finalize Pilot implementation and evaluation metrics                                     | Core Planning Team/Consultant   | March 2021            |
| Implementation meeting with partners   | Core Planning Team/Consultant   | Mar. 15, 2021         |
| Launch Campaign Pilot Phase  | Jurisdictions   | Apr. 1, 2021          |

|  |   |                      |
|--|---|----------------------|
| Tracking/follow-up with partners                           | Core Planning Team                          | April - September    |
| Ongoing site evaluation and monitoring                     | Jurisdictions                               | April-September      |
| Collect and aggregate Pilot Evaluations from jurisdictions | Consultant                                  |                      |
| Begin drafting Pilot evaluation summary report             | Core Planning Team                          | October 2021         |
| Finalize evaluation of Pilot Phase, ROI on toolkit options | Jurisdictions/Core planning Team/Consultant | December 2021        |
| Adapt/modify campaign based on pilot evaluation            | Partners, Core Planning Team                | January 2022         |
| Broad-scale implementation                                 | Jurisdictions                               | Feb. 2022 – Dec 2023 |
| Ongoing site monitoring and evaluation                     | Jurisdictions                               | Feb. 2022 – Dec 2023 |
| Develop evaluation report outline                          | Core Planning Team                          | November 2023        |
| Final evaluation and reporting                             | Jurisdictions/Core Planning Team            | Jan.-Mar. 2024       |

## Q24a Narrative for City of Enumclaw 2025 Annual Report

---

### Q24a Attach a list of Stewardship Opportunities provided. (S5.C.2.a.iii)

- Partnered with Beautify Enumclaw in which many local residents volunteered with small improvements and clean-up in the City of Enumclaw. During the 2025 event held on 9/13/2025, volunteers (including the Mayor and Council members) performed work including, but not limited to, installation of riparian plantings, invasive species control, weeding and composting of a community garden, and maintenance at various parks and playfields within the city.
- In 2025, the City worked with the Enumclaw Plateau Community Association who provides riparian planting stewardship opportunities to volunteers in Enumclaw. The city coordinated with leaders of this organization to support their ongoing riparian planting project along an unnamed tributary to Boise Creek. Assistance was provided by donating water for the plantings during hot summer months through an extension of the city water system performed in 2023, advising on grant opportunities that they may be eligible for to assist with funding additional plantings, coordination with the drainage district to assist with clean-up along the riparian planting area, and incorporation of the stewardship project in the annual beautify Enumclaw Event. In 2025, the city acquired a design and contracted for a temporary irrigation system to be installed within a large portion of the restoration site area. Furthermore, the City provided equipment and staff to perform invasive species vegetation management in a portion of the riparian planting area to help ensure survival of the native plants installed. City staff also worked with EPCA to support a stewardship event with Free the Green at the site for community members to perform invasive species work and plant new riparian vegetation.
- The City of Enumclaw hosted an Enumclaw Recycling Event at the City Expo Center which promoted residents to properly recycle and dispose of various universal and dangerous wastes (batteries, florescent bulbs, used oil, etc.) and other recyclables. In 2025, 365 carloads of recyclable material arrived to properly recycle various materials. The event resulted in collection of roughly 36,820 lbs scrap metal, 1,440 lbs of scrap wood, 7 refrigerators/freezers, 16 propane tanks, 385 gallons of used motor oil, 110 gallons of used antifreeze, 15 used oil filters, 147 used tires, 13 lead acid batteries, 6,280 household batteries, 10 mattresses, 10 toilets/sinks and much more. To encourage the use of recycled content material and more efficient use of water/resources, rain barrel's and compost bins were also advertised and sold at the event to residents at a discount rate. While not only promoting sustainable practices and protection of resources, this event helped reduce various household pollutants that may otherwise have been disposed inappropriately, contributing to pollution in the region.

| Outfall_ID                                       | Permit_Number | Latitude_Decimal_De | Longitude_Decimal_Degrees | Horizontal_Datum                            | Horizontal_Coordinate_Accuracy | Horizontal_Coordinate_Collection_Method                  | Outfall_Elevation | Elevation_Units | Vertical_Datum                              | Elevation_Accuracy | Elevation_Collection_Method            | Pipe_Or_Ditch_Size | Pipe_Or_Ditch_Size_Units     | Pipe_Or_Ditch_Material       | Receiving_Waters                      | Location_Description  |
|--|---------------|---------------------|---------------------------|---|--------------------------------|--|-------------------|-----------------|---|--------------------|--|--------------------|------------------------------|------------------------------|---------------------------------------|---|
| Boise Creek Park Outfall SWOUT009                | WAR045514     | 47.180301           | -122.013504               | NAD83HARN - High Accuracy Reference Network | ± 3 ft (1 m)                   | Computer map (GIS-based, including EIM or Google Earth). | 717.973           | Feet            | NAVD88 - N. American Vertical Datum of 1988 | ± 0.1 ft (0.03 m)  | GPS real time survey grade (kinematic) | 48                 | Inches                       | Corrugated Metal Pipe        | Unnamed Tributary to Boise Creek      | Boise Creek Park Outfall  |
| McHugh Ave Outfall SWOUT002                      | WAR045514     | 47.213017           | -122.007422               | NAD83HARN - High Accuracy Reference Network | ± 3 ft (1 m)                   | Computer map (GIS-based, including EIM or Google Earth). | 689.014           | Feet            | NAVD88 - N. American Vertical Datum of 1988 | ± 0.1 ft (0.03 m)  | GPS real time survey grade (kinematic) | 42                 | Inches                       | Corrugated Metal Pipe        | Unnamed Tributary to Newaukum Creek   | Outfall at 2951 McHugh (Assumed Outfall)  |
| Main Flume North Outfall SWOUT032                | WAR045514     | 47.199017           | -121.991626               | NAD83HARN - High Accuracy Reference Network | ± 3 ft (1 m)                   | Computer map (GIS-based, including EIM or Google Earth). | 735.834           | Feet            | NAVD88 - N. American Vertical Datum of 1988 | ± 0.1 ft (0.03 m)  | GPS real time survey grade (kinematic) | 36                 | Inches                       | Corrugated Polyethylene Pipe | Unnamed Tributary to Boise Creek      | King County Drainage District 6, Main Flume (flows southwest), Outfall's Near O'Riley's Autoparts (Assumed Outfall)   |
| Main Flume West Outfall SWOUT031                 | WAR045514     | 47.198496           | -121.992614               | NAD83HARN - High Accuracy Reference Network | ± 3 ft (1 m)                   | Computer map (GIS-based, including EIM or Google Earth). | 735.559           | Feet            | NAVD88 - N. American Vertical Datum of 1988 | ± 0.1 ft (0.03 m)  | GPS real time survey grade (kinematic) | 42 x 36            | Inches                       | Concrete                     | Unnamed Tributary to Boise Creek      | King County Drainage District 6, Main Flume (flows east), Duel Pipe Outfall Near Foothills Trail (Assumed Outfall)  |
| Dickson Ditch Outfall SWOUT031                   | WAR045514     | 47.197481           | -121.993141               | NAD83HARN - High Accuracy Reference Network | ± 3 ft (1 m)                   | Computer map (GIS-based, including EIM or Google Earth). | 734.242           | Feet            | NAVD88 - N. American Vertical Datum of 1988 | ± 0.1 ft (0.03 m)  | GPS real time survey grade (kinematic) | 24                 | Inches (Equivalent diameter) | Ditch                        | Unnamed Tributary to Boise Creek      | City Ditch along Dickson Ave., Outfalls to King County Drainage District Main Flume. Estimated size based upon upstream contributing culvert dimensions (Assumed Outfall) |
| Main Flume Warner Outfall SWOUT026               | WAR045514     | 47.191944           | -121.998889               | NAD83HARN - High Accuracy Reference Network | ± 3 ft (1 m)                   | Computer map (GIS-based, including EIM or Google Earth). | 731.689           | Feet            | NAVD88 - N. American Vertical Datum of 1988 | ± 0.1 ft (0.03 m)  | GPS real time survey grade (kinematic) | 18                 | Inches                       | Corrugated Polyethylene Pipe | Unnamed Tributary to Boise Creek      | Warner Ave Drainage Outfall to King County Drainage District 6 Main Flume (Assumed Outfall)   |
| Foothills Trail Bridge SWOUT009                  | WAR045514     | 47.185163           | -122.006612               | NAD83HARN - High Accuracy Reference Network | ± 3 ft (1 m)                   | Computer map (GIS-based, including EIM or Google Earth). | 724.508           | Feet            | NAVD88 - N. American Vertical Datum of 1988 | ± 0.1 ft (0.03 m)  | GPS real time survey grade (kinematic) | 54                 | Inches                       | Other (Vegetated Ditch)      | Boise Creek                           | Outfall Near Foothills Trail Bridge. Estimated size is based on upstream contributing culvert dimensions.   |
| Baysinger PL Outfall SWOUT040                    | WAR045514     | 47.193643           | -121.991630               | NAD83HARN - High Accuracy Reference Network | ± 3 ft (1 m)                   | Computer map (GIS-based, including EIM or Google Earth). | 735.38            | Feet            | NAVD88 - N. American Vertical Datum of 1988 | ± 0.1 ft (0.03 m)  | GPS real time survey grade (kinematic) | 18                 | Inches (Equivalent diameter) | Swale                        | Unnamed Tributary to Boise Creek      | Baysinger PL Swale Discharge to King County Drainage District 6 Lateral A. Estimated size is based on upstream contributing pipe dimensions (Assumed Outfall)             |
| Blake Street Outfall SWOUT041                    | WAR045514     | 47.193151           | -121.984440               | NAD83HARN - High Accuracy Reference Network | ± 3 ft (1 m)                   | Computer map (GIS-based, including EIM or Google Earth). | 738.983           | Feet            | NAVD88 - N. American Vertical Datum of 1988 | ± 0.1 ft (0.03 m)  | GPS real time survey grade (kinematic) | 12 x 8             | Inches                       | Concrete                     | Unnamed Tributary to Boise Creek      | Blake Street Outfall to King County Drainage District 6 Lateral A. (Assumed Outfall)  |
| Jewell Street Main Outfall SWOUT042              | WAR045514     | 47.193164           | -121.982665               | NAD83HARN - High Accuracy Reference Network | ± 3 ft (1 m)                   | Computer map (GIS-based, including EIM or Google Earth). | 736.11            | Feet            | NAVD88 - N. American Vertical Datum of 1988 | ± 0.1 ft (0.03 m)  | GPS real time survey grade (kinematic) | 24                 | Inches                       | Concrete                     | Unnamed Tributary to Boise Creek      | Jewell Street Housing Development Main Outfall to King County Drainage District 6 Lateral A (Assumed Outfall)   |
| Jewell Street Secondary Outfall SWOUT043         | WAR045514     | 47.193156           | -121.980677               | NAD83HARN - High Accuracy Reference Network | ± 3 ft (1 m)                   | Computer map (GIS-based, including EIM or Google Earth). | 736.34            | Feet            | NAVD88 - N. American Vertical Datum of 1988 | ± 0.1 ft (0.03 m)  | GPS real time survey grade (kinematic) | 8                  | Inches                       | Polyvinyl Chloride           | Unnamed Tributary to Boise Creek      | Jewell Street Housing Development Secondary Outfall to King County Drainage District 6 Lateral A (Assumed Outfall)  |
| Elk Meadows 1 Pond Outfall SWOUT044              | WAR045514     | 47.193153           | -121.978796               | NAD83HARN - High Accuracy Reference Network | ± 3 ft (1 m)                   | Computer map (GIS-based, including EIM or Google Earth). | 735.75            | Feet            | NAVD88 - N. American Vertical Datum of 1988 | ± 0.1 ft (0.03 m)  | GPS real time survey grade (kinematic) | 24                 | Inches                       | Corrugated Polyethylene Pipe | Unnamed Tributary to Boise Creek      | Elk Meadows 1 Housing Development Stormwater Pond Outfall to King County Drainage District 6 Lateral A (Assumed Outfall)  |
| Elk Meadows 3 Pond Outfall SWOUT046              | WAR045514     | 47.193120           | -121.978278               | NAD83HARN - High Accuracy Reference Network | ± 3 ft (1 m)                   | Computer map (GIS-based, including EIM or Google Earth). | 737.25            | Feet            | NAVD88 - N. American Vertical Datum of 1988 | ± 0.1 ft (0.03 m)  | GPS real time survey grade (kinematic) | 18                 | Inches                       | Corrugated Polyethylene Pipe | Unnamed Tributary to Boise Creek      | Elk Meadows 3 Housing Development Stormwater Pond Outfall to King County Drainage District 6 Lateral A (Assumed Outfall)  |
| Lateral A Warner Outfall SWOUT045                | WAR045514     | 47.193132           | -121.977738               | NAD83HARN - High Accuracy Reference Network | ± 3 ft (1 m)                   | Computer map (GIS-based, including EIM or Google Earth). | 737.50            | Feet            | NAVD88 - N. American Vertical Datum of 1988 | ± 0.1 ft (0.03 m)  | GPS real time survey grade (kinematic) | 18                 | Inches                       | Corrugated Polyethylene Pipe | Unnamed Tributary to Boise Creek      | Outfall from Warner Ave Drainage to King County Drainage District 6 Lateral A (Assumed Outfall)   |
| Sigrist Drive Koras Pond Outfall SWOUT047        | WAR045514     | 47.193158           | -121.976339               | NAD83HARN - High Accuracy Reference Network | ± 3 ft (1 m)                   | Computer map (GIS-based, including EIM or Google Earth). | 740.914           | Feet            | NAVD88 - N. American Vertical Datum of 1988 | ± 0.1 ft (0.03 m)  | GPS real time survey grade (kinematic) | 18                 | Inches                       | Ductile Iron                 | Unnamed Tributary to Boise Creek      | Stormwater Pond Outfall from Suntop Farms Housing Development to King County Drainage District 6 Lateral A (Assumed Outfall)  |
| Riley Court Pond Outfall SWOUT048                | WAR045514     | 47.193079           | -121.975723               | NAD83HARN - High Accuracy Reference Network | ± 3 ft (1 m)                   | Computer map (GIS-based, including EIM or Google Earth). | 737.50            | Feet            | NAVD88 - N. American Vertical Datum of 1988 | ± 0.1 ft (0.03 m)  | GPS real time survey grade (kinematic) | 18                 | Inches                       | Corrugated Polyethylene Pipe | Unnamed Tributary to Boise Creek      | Stormwater Pond Outfall from Suntop Farms Housing Development to King County Drainage District 6 Lateral A (Assumed Outfall)  |
| Suntop PUD Lateral A Outfall SWOUT049            | WAR045514     | 47.193150           | -121.973879               | NAD83HARN - High Accuracy Reference Network | ± 3 ft (1 m)                   | Computer map (GIS-based, including EIM or Google Earth). | 741.484           | Feet            | NAVD88 - N. American Vertical Datum of 1988 | ± 0.1 ft (0.03 m)  | GPS real time survey grade (kinematic) | 18                 | Inches                       | Corrugated Polyethylene Pipe | Unnamed Tributary to Boise Creek      | Stormwater Pond Outfall from Suntop PUD Housing Development to King County Drainage District 6 Lateral A (Assumed Outfall)  |
| Suntop PUD Watercress Creek Outfall 1 SWOUT051   | WAR045514     | 47.198160           | -121.973889               | NAD83HARN - High Accuracy Reference Network | ± 3 ft (1 m)                   | Computer map (GIS-based, including EIM or Google Earth). | 738.30            | Feet            | NAVD88 - N. American Vertical Datum of 1988 | ± 0.1 ft (0.03 m)  | GPS real time survey grade (kinematic) | 18                 | Inches                       | Corrugated Polyethylene Pipe | Watercress Creek/Newaukum Creek       | Stormwater Pond Outfall from Suntop PUD Housing Development to Watercress Creek (Tributary To Newaukum Creek)   |
| Golf Course Outfall SWOUT010                     | WAR045514     | 47.194987           | -121.956820               | NAD83HARN - High Accuracy Reference Network | ± 3 ft (1 m)                   | Computer map (GIS-based, including EIM or Google Earth). | 796.022           | Feet            | NAVD88 - N. American Vertical Datum of 1988 | ± 0.1 ft (0.03 m)  | GPS real time survey grade (kinematic) | 24                 | Inches                       | Corrugated Metal Pipe        | Boise Creek                           | Golf Course Drainage Outfall to Chapel Springs which flows into Boise Creek   |
| Battersby Ave Outfall SWOUT011                   | WAR045514     | 47.206624           | -121.973883               | NAD83HARN - High Accuracy Reference Network | ± 3 ft (1 m)                   | Computer map (GIS-based, including EIM or Google Earth). | 735.73            | Feet            | NAVD88 - N. American Vertical Datum of 1988 | ± 0.1 ft (0.03 m)  | GPS real time survey grade (kinematic) | 18                 | Inches                       | Corrugated Metal Pipe        | Watercress Creek/Newaukum Creek       | Drainage Ditch Outfall into Watercress Creek At the Battersby Ave Culvert Crossing  |
| Franks Pond Outfall SWOUT020                     | WAR045514     | 47.206626           | -121.979319               | NAD83HARN - High Accuracy Reference Network | ± 3 ft (1 m)                   | Computer map (GIS-based, including EIM or Google Earth). | 734.643           | Feet            | NAVD88 - N. American Vertical Datum of 1988 | ± 0.1 ft (0.03 m)  | GPS real time survey grade (kinematic) | 30                 | Inches                       | Concrete                     | Unnamed Tributary to Watercress Creek | Franks Stormwater Pond Outfall to King County Drainage District 5 Lateral A (Assumed Outfall)   |
| Koopman Pond Outfall SWOUT058                    | WAR045514     | 47.193143           | -121.979062               | NAD83HARN - High Accuracy Reference Network | ± 3 ft (1 m)                   | Computer map (GIS-based, including EIM or Google Earth). | 741.2             | Feet            | NAVD88 - N. American Vertical Datum of 1988 | ± 0.1 ft (0.03 m)  | GPS real time survey grade (kinematic) | 12                 | Inches                       | Polyvinyl Chloride           | Unnamed Tributary to Boise Creek      | Stormwater Pond Outfall from Koopman Plat Housing Development to King County Drainage District 6 Lateral A (Assumed Outfall)  |
| Watson St. Lateral A Outfall SWOUT057            | WAR045514     | 47.193138           | -121.978889               | NAD83HARN - High Accuracy Reference Network | ± 3 ft (1 m)                   | Computer map (GIS-based, including EIM or Google Earth). | 740.64            | Feet            | NAVD88 - N. American Vertical Datum of 1988 | ± 0.1 ft (0.03 m)  | GPS real time survey grade (kinematic) | 15                 | Inches                       | Ductile Iron                 | Unnamed Tributary to Boise Creek      | Watson Street N Drainage Outfall to King County Drainage District 6 Lateral A (Assumed Outfall)   |
| Suntop PUD 5 Watercress Creek Outfall 2 SWOUT059 | WAR045514     | 47.198746           | -121.973836               | NAD83HARN - High Accuracy Reference Network | ± 3 ft (1 m)                   | Computer map (GIS-based, including EIM or Google Earth). | 738.10            | Feet            | NAVD88 - N. American Vertical Datum of 1988 | ± 0.1 ft (0.03 m)  | GPS real time survey grade (kinematic) | 18                 | Inches                       | Corrugated Polyethylene Pipe | Watercress Creek/Newaukum Creek       | Stormwater Pond Outfall from Suntop PUD Division 5 Phase 2 to Watercress Creek (Tributary To Newaukum Creek)  |
| Suntop PUD 5 Watercress Outfall SWOUT080         | WAR045514     | 47.198611           | -121.973611               | NAD83HARN - High Accuracy Reference Network | ± 3 ft (1 m)                   | Computer map (GIS-based, including EIM or Google Earth). | 738.0             | Feet            | NAVD88 - N. American Vertical Datum of 1988 | ± 0.1 ft (0.03 m)  | GPS real time survey grade (kinematic) | 1.8                | Cubic Feet                   | Corrugated Polyethylene Pipe | Watercress Creek/Newaukum Creek       | Stormwater Ditch Outfall at Suntop PUD Division 5 Phase 2 to Watercress Creek (Tributary To Newaukum Creek)   |
| Kibler Ave Outfall SWOUT001                      | WAR045514     | 47.210248           | -122.014367               | NAD83HARN - High Accuracy Reference Network | ± 3 ft (1 m)                   | Computer map (GIS-based, including EIM or Google Earth). | 661.43            | Feet            | NAVD88 - N. American Vertical Datum of 1988 | ± 0.1 ft (0.03 m)  | GPS real time survey grade (kinematic) | 36                 | Inches                       | Concrete                     | Unnamed Tributary to Newaukum Creek   | Culvert Crossing of Kibler Ave to Unnamed Tributary to Newaukum Creek   |
| Summit View (Gateway) Outfall SWOUT085           | WAR045514     | 47.193141           | -121.987246               | NAD83HARN - High Accuracy Reference Network | ± 3 ft (1 m)                   | Computer map (GIS-based, including EIM or Google Earth). | 738.736           | Feet            | NAVD88 - N. American Vertical Datum of 1988 | ± 0.1 ft (0.03 m)  | GPS real time survey grade (kinematic) | 12                 | Inches                       | High-Density Polyethylene    | Unnamed Tributary to Boise Creek      | Stormwater Pond Outfall from Summit View single family development to Drainage District 6 Lateral A   |
| Sunrise Vista Outfall SWOUT086                   | WAR045514     | 47.197787           | -121.973506               | NAD83HARN - High Accuracy Reference Network | ± 3 ft (1 m)                   | Computer map (GIS-based, including EIM or Google Earth). | 741.92            | Feet            | NAVD88 - N. American Vertical Datum of 1988 | ± 0.1 ft (0.03 m)  | GPS real time survey grade (kinematic) | 24                 | Inches                       | Polypropylene                | Watercress Creek/Newaukum Creek       | Stormwater Pond Outfall from Sunrise vista single family development to Watercress Creek (Tributary to Newaukum Creek)  |
| Battersby Ave Outfall 2 SWOUT088                 | WAR045514     | 47.206516           | -121.978866               | NAD83HARN - High Accuracy Reference Network | ± 3 ft (1 m)                   | GPS real time survey-grade (kinematic)                   | 737.47            | Feet            | NAVD88 - N. American Vertical Datum of 1988 | ± 0.1 ft (0.03 m)  | GPS real time survey grade (kinematic) | 18                 | Inches                       | High-Density Polyethylene    | Unnamed Tributary to Watercress Creek | Battersby Roadside drainage ditch outfall to Unnamed Tributary to Watercress Creek  |
| Battersby Ave Outfall 3 SWOUT089                 | WAR045514     | 47.206630           | -121.979030               | NAD83HARN - High Accuracy Reference Network | ± 3 ft (1 m)                   | GPS real time survey-grade (kinematic)                   | 735.80            | Feet            | NAVD88 - N. American Vertical Datum of 1988 | ± 0.1 ft (0.03 m)  | GPS real time survey grade (kinematic) | 12                 | Inches                       | Concrete                     | Unnamed Tributary to Watercress Creek | Battersby Roadside drainage ditch outfall to Unnamed Tributary to Watercress Creek  |
| Battersby Ave Outfall 4 SWOUT090                 | WAR045514     | 47.206626           | -121.973849               | NAD83HARN - High Accuracy Reference Network | ± 3 ft (1 m)                   | GPS real time survey-grade (kinematic)                   | 737.14            | Feet            | NAVD88 - N. American Vertical Datum of 1988 | ± 0.1 ft (0.03 m)  | GPS real time survey grade (kinematic) | 12                 | Inches                       | High-Density Polyethylene    | Watercress Creek/Newaukum Creek       | Battersby Roadside drainage ditch outfall to Watercress Creek   |

## Q32a Narrative for City of Enumclaw 2025 Annual Report

---

### Q32a Describe the information sharing actions. (S5.C.5.b)

- Routinely educated contractors about illicit discharges as part of site inspections. Most common topics of discussion were the importance of using appropriate BMPs to avoid track-out and managing construction site runoff to protect City stormwater systems that discharge into Newaukum and Boise creeks.
- In the Community Development/Public Works lobby, displayed pet waste and car wash posters from *Puget Sound Starts Here* illustrating proper disposal of pet waste and car washing info.
- Routinely provided IDDE related illicit discharge information on the City's Facebook page. In 2025 this included posts on "Spills Happen" with information on how residents can contact the City to help clean them up. Posts also included information on how to properly contain wash water from vehicle washing.
- Provide Pet Waste education signage at all City Parks and require them to be installed at appropriate locations for all new development projects.
- Continued distributing car wash alternative brochures when requested which advise residents how to properly wash their cars and mitigate pollution from that activity.
- In the course of routine interactions with citizens and businesses, City staff utilized opportunities to educate about illicit discharges, stormwater pollution and proper disposal of trash and pet waste.
- As part of the City source control program implemented in 2025, city stormwater staff educated businesses on stormwater pollution prevention BMPs that are required for the various activities at their site and on the spills mitigation and reporting requirements. In 2025, education on source control BMPs related to IDDE was provided in person to 32 businesses.
- Newly hired operations field and police department staff participated in IDDE training in 2025. Refresher training for operations field and police staff was also performed as needed.
- Newly hired city operations field staff participated in training on proper implementation of TESC BMPs for various maintenance and construction operations. Refresher training of operations field staff is also performed as needed.
- City staff utilized illicit discharge incidents (ERTS) as opportunities to educate businesses, the general public (i.e. bystanders) and public employees about illicit discharges and the proper disposal of waste.
- Prepare and send notice to applicable businesses or private properties with educational information regarding the unauthorized practice of illicit discharges. These letters typically emphasized *Only Rain Down the Drain*. In 2025, letters sent to downtown restaurants emphasized proper grease management practices.
- Provide IDDE and spills information on the city's stormwater website.
- The city established their own public works booth at the Enumclaw Street Fair in 2025 and provided in-person stormwater educational and outreach information to fair attendees during both days of this event. Education and outreach material was provided on the difference between storm sewer and sanitary sewer, pet waste facts, IDDE, spills hotline, etc.



## Q58 Narrative for City of Enumclaw 2025 Annual Report

---

### Q58 Attach a summary of actions taken to implement the source control program per S5.C.8.a-d.

- Advise City administration of permit source control requirements that need to be properly funded. Hired a new permanent Engineering Technician in 2022 who is responsible for managing the source control program and conducting routine source control inspections.
- Established and managed a business source control inspection tracking and reporting system in the City's asset management program (Cartegraph/Open Gov). The source control inspection and reporting system was used in 2025 to track inspections, actions, outreach, and other permit required source control inspection information.
- The city source control inspector attends permit coordinators meetings and BIG meetings to learn about various source control topics of interest and to refine our source control program as deemed appropriate.
- Review source control content available on the Washington Stormwater Center Website. Save appropriate templates, forms, education and outreach, inspection reports and other related information that can be incorporated into the city source control program and inspections.
- Adopted a source control ordinance requiring the application of source control BMPs for pollutant generating sources associated with existing land uses and activities. Language in the ordinance is consistent with what other Phase II permittees adopted. Enforce ordinance when required.
- Advised business owners of source control requirements during source control inspections and IDDE incident response by City staff.
- All staff responsible for implementing the source control program have attended source control training provided by the Washington Stormwater Center and attend follow-up training when available and deemed beneficial.
- Established and maintain a potential pollution generating business list. These businesses were identified primarily through evaluation of the city's business licenses list and associated business NAIC codes against Appendix 8 of the permit and TMDL required NAIC codes. Additional businesses were added through use of Google Maps to find and evaluate other businesses located within the city but for which didn't have a business license or listed the wrong NAICS code. Applicable City owned or operated facilities were also included. The initial list of 200 businesses was increased to 207 business in 2023 do to addition of some more routine mobile businesses who operate inside the city as well as businesses added do to complaint response. In 2025 apartment complexes were added as well as a few additional regular mobile vendors which brought the total list count up to 219. Updates to the list are performed as needed and no greater than once every five years.
- Follow a standard operation procedures for the source control inspection program to ensure consistent, effective, efficient, and transparent inspection and enforcement process and to ultimately reduce the risk of pollution to the MS4 and surface waters.
- Created and distribute a flyer which provides education and outreach information on the source control inspection program, spills reporting information, and typical source control BMPs

applicable to most sites. Distributed the flyer via mail and email to all pollution generating businesses on the city's list and provide additional copies of the flyer to businesses during routine business inspections.

- Provide businesses with templates, posters, and other information during source control inspections to assist with fulfillment of various operation source control BMPs (i.e. spill plans, spill training, spill kit supplier info, spill response and storm maintenance contractor list, and the city's associated spill pollution and dumpster lid outreach.
- Incorporated dumpster lid outreach and spill response outreach of the city's behavior change campaign into the source control inspection program and incorporated tracking mechanisms within the source control inspection software (Cartegraph/Open Gov).
- Conducted 48 business source control inspections (including follow-up inspections) at a total of 32 businesses/sites in 2025 to assess BMP effectiveness and compliance with source control requirements. This inspection total in 2025 meets the minimum annual 20 percent inspection frequency requirement outlined in the permit. To-date, since the creation of the program, 143 inspections have been conducted at over 96 businesses. Businesses were selected based on potential for pollution generation, complaint based inspection responses, required TMDL inspections, and at businesses located within the high priority catchment area as a component of the Stormwater Management Action Plan (SMAP) developed under other permit requirements. 100% of sites identified through credible complaints were inspected. Only 1 property to-date has denied entry to portion of their site. In 2023, City staff coordinated to inspect 4 sites with both the Ecology Regional Industrial Stormwater Permit Inspector as well as EPA Region 10 surface water enforcement.
- Upon inspection, the City took appropriate follow-up actions as deemed applicable for each site in the form of letters, phone calls, emails, follow-up inspections, and onsite meetings to help bring the site into compliance with required source control BMPs. In 2025, the city was able to rectify all issues within a timely manner without issuing a formal notice of violation on any site. Additionally, no sites were referred to Ecology to assist with non-emergency violations.
- Implemented a structural source control capital improvement project at the City of Enumclaw Expo Center in 2024. The project extended the sanitary sewer system >400ft to the sites livestock animal wash area to mitigate associated pollutants from animal wash activities from discharging into the storm system.

City of Enumclaw 2025 Business Source Control Inspections

| General Business Type    | NAICS Business Category   | NAICS Major Group | Parcel Number | Address Number | Street             | Inspection Date | Inspection Type | Task ID   | Enforcement Action Taken |
|--------------------------|---|-------------------|---------------|----------------|--------------------|-----------------|-----------------|-----------|--------------------------|
| Automotive               | Car museum  | 711219            | 2361000040    | 1920           | Garrett            | 4/8/2025        | Initial         | TASK76999 | No                       |
| Automotive               | Commercial and Industrial Machinery and Equipment (except Automotive)         | 811310            | 2361500100    | 930            | Battersby Ave #103 | 4/13/2025       | Initial         | TASK76517 | No                       |
| Automotive               | Automotive Body, Paint, and Interior Repair and Maintenance                   | 811121            | 2420069398    | 313            | Rainier            | 6/24/2025       | Initial         | TASK81508 | No                       |
| Automotive               | Other Personal and Household Goods Repair and Maintenance                     | 811490            | 2361000060    | 1724           | Garrett            | 7/23/2025       | Initial         | TASK82826 | No                       |
| Automotive               | General Automotive Repair   | 811111            | 3966900035    | 1942           | Railroad           | 6/12/2025       | Initial         | TASK81531 | No                       |
| Food Service             | Limited-Service Restaurants   | 722513            | 2420069598    | 1343           | Garrett            | 4/11/2025       | Initial         | TASK77322 | No                       |
| Food Service             | Supermarkets and Other Grocery Retailers                                      | 445110            | 2420069121    | 1011           | Monroe             | 4/24/2025       | Initial         | TASK45996 | No                       |
| Food Service             | Food Services and Drinking Places   | 722511            | 2361800005    | 1502           | Railroad           | 1/2/2025        | Initial         | TASK48531 | No                       |
| Food Service             | Food Services and Drinking Places   | 722511            | 2361800200    | 1537           | Cole               | 3/28/2025       | Initial         | TASK76438 | No                       |
| Food Service             | International, Secondary Market   | 522299            | 8006100275    | 1142           | Cole               | 6/12/2025       | Initial         | TASK80722 | No                       |
| Food Service             | Beverage (e.g., coffee, juice, soft drink) bars, nonalcoholic, fixed location | 722515            | 2420069098    | 330            | Roosevelt Ave      | 4/4/2025        | Initial         | TASK76994 | No                       |
| Food Service             | Food Services and Drinking Places   | 722511            | 2361800005    | 1502           | Railroad           | 4/30/2025       | Complaint       | TASK78129 | No                       |
| Food Service             | Food Services and Drinking Places   | 722511            | 2420069572    | 117            | Roosevelt Ave      | 6/12/2025       | Initial         | TASK81505 | No                       |
| Food Service             | Drinking Places (alcoholic beverages)   | 722410            | 2361800050    | 1113           | Griffin            | 6/12/2025       | Initial         | TASK81457 | No                       |
| Food Service             | Snack and Nonalcoholic Beverage Bars  | 722515            | 2420069089    | 358            | Rainier            | 6/12/2025       | Initial         | TASK81534 | No                       |
| Food Service             | Snack and Nonalcoholic Beverage Bars  | 722515            | 2420069127    | 1325           | Cole               | 6/12/2025       | Initial         | TASK81386 | No                       |
| Food Service             | International Secondary Market  | 311412            | 8006100275    | 1142           | Cole               | 6/12/2025       | Initial         | TASK80722 | No                       |
| Food Service             | Snack and Nonalcoholic Beverage Bars  | 722515            | 2520069107    | 230            | Roosevelt Ave E    | 7/29/2025       | Initial         | TASK82939 | No                       |
| Food Service             | Coffee Stand  | 722515            | 2030100140    | 920            | Roosevelt Ave      | 6/24/2025       | Initial         | TASK76743 | No                       |
| Food Service             | Crystal Plaza/Frankies Pizza  | 722513            | 2420069572    | 117            | Roosevelt Ave      | 6/24/2025       | Initial         | TASK81505 | No                       |
| Food Service             | Mobile Food Services  | 722330            | 2420069341    | 320            | Griffin            | 7/9/2025        | Initial         | TASK82320 | No                       |
| Food Service             | Beverage (e.g., coffee, juice, soft drink) bars, nonalcoholic, fixed location | 813110            | 2030100140    | 920            | Roosevelt          | 4/3/2025        | Initial         | TASK76743 | No                       |
| Government               | Government Facilities   | 92                | 2361500090    | 2041           | Railroad           | 4/4/2025        | Initial         | TASK76728 | No                       |
| Health & Medicine        | Physician Office  | 621111            | 2420069241    | 1145           | Cole               | 6/24/2025       | Initial         | TASK81454 | No                       |
| Hotels                   | Hotels (except Casino Hotels) and Motels                                      | 721110            | 2361500070    | 1000           | Griffin            | 6/4/2025        | Initial         | TASK80405 | No                       |
| Hotels                   | Hotels (except Casino Hotels) and Motels                                      | 721110            | 2361500070    | 1000           | Griffin            | 7/8/2025        | Follow-up       | TASK82818 | No                       |
| Manufacturing            | Street & Building construction  | 237310            | 7127300265    | 1628           | 3rd St #101        | 4/3/2025        | Initial         | TASK76740 | No                       |
| Manufacturing            | Stageplan   | 339930            | 2420069542    | 1101           | Battersby Ave      | 10/17/2025      | Initial         | TASK95575 | No                       |
| Manufacturing            | Metal Manufacturing   | 332               | 2520069101    | 410            | Roosevelt Ave E    | 10/8/2025       | Initial         | TASK95053 | No                       |
| Multi-Family Residential | Residential Property Managers   | 531311            | 2420069517    | 320            | Chinook Ave        | 7/15/2025       | Initial         | TASK81753 | No                       |
| Multi-Family Residential | Residential Property Managers   | 531311            | 7596900010    | 219            | Semanski St S      | 7/24/2025       | Initial         | TASK82831 | No                       |
| Multi-Family Residential | Residential Property Managers   | 531311            | 3257500120    | 2745           | Warner Ave         | 6/27/2025       | Initial         | TASK82829 | No                       |
| Multi-Family Residential | Residential Property Managers   | 531311            | 2320069025    | 1600           | Garfield St        | 7/24/2025       | Initial         | TASK82831 | No                       |
| Multi-Family Residential | Residential Property Managers   | 531311            | 2420069031    | 1323           | Battersby Ave      | 7/24/2025       | Initial         | TASK82830 | No                       |
| Multi-Family Residential | Residential Property Managers   | 531311            | 2520069003    | 750            | Watson St N #103   | 9/11/2025       | Initial         | TASK82827 | No                       |
| Multi-Family Residential | Residential Property Managers   | 531311            | 2520069122    | 615            | Watson St N APT E  | 7/24/2025       | Initial         | TASK82828 | No                       |
| Multi-Family Residential | Residential Property Managers   | 531311            | 2030100451    | 820            | Mountain Villa Dr  | 6/27/2025       | Initial         | TASK81755 | No                       |
| Multi-Family Residential | Residential Property Managers   | 531311            | 2620069024    | 219            | Semanski St        | 6/27/2025       | Initial         | TASK81772 | No                       |
| Multi-Family Residential | Residential Property Managers   | 531311            | 2620069131    | 2745           | Warner Ave         | 6/27/2025       | Initial         | TASK81754 | No                       |
| Multi-Family Residential | Residential Property Managers   | 531311            | 2620069024    | 219            | Semanski St        | 9/11/2025       | Follow-up       | TASK91475 | No                       |
| Multi-Family Residential | Residential Property Managers   | 531311            | 2520069003    | 750            | Watson St N #103   | 9/11/2025       | Follow-up       | TASK91503 | No                       |
| Multi-Family Residential | Residential Property Managers   | 531311            | 2420069517    | 320            | Chinook Ave        | 9/11/2025       | Follow-up       | TASK91504 | No                       |
| Multi-Family Residential | Residential Property Managers   | 531311            | 2420069517    | 320            | Chinook Ave        | 9/22/2025       | Follow-up       | TASK95039 | No                       |
| Multi-Family Residential | Residential Property Managers   | 531311            | 2030100451    | 820            | Mountain Villa Dr  | 11/7/2025       | Initial         | TASK81755 | No                       |
| Multi-Family Residential | Residential Property Managers   | 531311            | 2520069122    | 615            | Watson St N        | 11/7/2025       | Initial         | TASK82828 | No                       |
| Multi-Family Residential | Residential Property Managers   | 531311            | 2420069517    | 320            | Chinook Ave        | 12/2/2025       | Follow-up       | TASK98932 | No                       |
| Other                    | Dry Cleaning & Laundry Services   | 812320            | 2420069149    | 420            | Griffin            | 4/2/2025        | Initial         | TASK76676 | No                       |
| Other                    | Lessors of Miniwarehouses and Self-Storage Units                              | 531110            | 2030100060    | 810            | Blake              | 7/29/2025       | Initial         | TASK82938 | No                       |

Notes:

1. Enforcement Action Taken specifically refers to notices of violation issued by city code enforcement
2. All sites inspected which have BMP deficiencies receive a Notice To Correct Letter
3. If multiple inspections were performed at a site, both the initial and follow-up inspections are listed above

## Q82 Narrative for City of Enumclaw 2025 Annual Report

---

**Q82 For TMDLs listed in Appendix 2: Attach a summary of relevant SWMP and Appendix 2 activities to address the applicable TMDL parameter(s). (S7.A)**

**2025 Compliance Activities and Recap of compliance Activities for the full 2024-2029 permit cycle.**

### **WRIA 10 – Fecal Coliform Bacterial TMDL**

- Continued fecal coliform field sampling program at identified sites from creek mile 1.7 to 1.0 that discharge into Boise Creek to assist in illicit discharge detection and elimination. See attached bacterial field screening results. Note: the list of bacteria screening results provided also include data from areas outside this TMDL designated area.
- Engineering Technician hired in 2022 continued to assist with routine fecal coliform bacteria field screening and source tracing efforts within the City during both the dry and wet seasons to try and identify illicit connections and discharges. Implemented schedules and activities identified in S5.C.5 in response to any confirmed illicit discharges or connections found. No confirmed illicit discharges or connections with bacteria sources have been found in the TMDL designated area during the current permit cycle.
- Coordinate with King County Stormwater services to perform bacterial DNA testing on various sample sites in the City to help in determining potential sources of the bacteria present in the area. Results obtained during the previous permit cycle do not indicate any human sources in the flume and laterals of the designated area bacteria field screening is being performed.
- Continue collaborating with King County, King Conservation District, WSDA, Seattle-King County Health, and Ecology to discuss TMDL strategies and share fecal coliform sampling data collected from creek mile 1.7 to 1.0 as well as the flume and laterals described above. Attended quarterly interagency meetings to discuss data and strategies to correct known issues across the Enumclaw Plateau.
- Previous bacterial source tracing efforts led to confirmation that significant bacterial loading (particularly winter loading) identified in the King County Drainage District Lateral A stream comes from a large agricultural property located outside the city limits. Ongoing monitoring/coordination/collaboration through the inter-agency group is being performed to identify potential options to eliminate/mitigate this source and other agriculture sources in the area.
- Continued pet waste education and outreach activities according to S5.C.2 to increase awareness of bacterial pollution problems and promote proper pet waste management behavior (see Question 20 narrative for more information). This included pet waste education and outreach at the City's booth during the Enumclaw Street Fair (2025).
- Installed and maintained animal waste education and collection stations at permittee owned municipal parks and trails including: Boise Creek Park, Dwight Garrett Park, Ellenson Park (Enumclaw Dog Park), the Foothills Trail, Flensted Park, Holdner Park, Martin Johnson Park, McFarland Park, Montgomery Park, Battersby Trail, and the Rainier Trails Park. Require the installation of animal waste signage and collection stations at all new private development with land areas where it can be reasonably expected to have substantial domestic animal use.

- In 2023, bacterial source control inspections performed at all commercial animal handling areas to ensure implementation of source control BMPs for bacteria. No bacteria source control problems identified. Facilities are included on the city's potential pollution generating business list and subject to future source control inspections.

#### **WRIA 10 – PH TMDL**

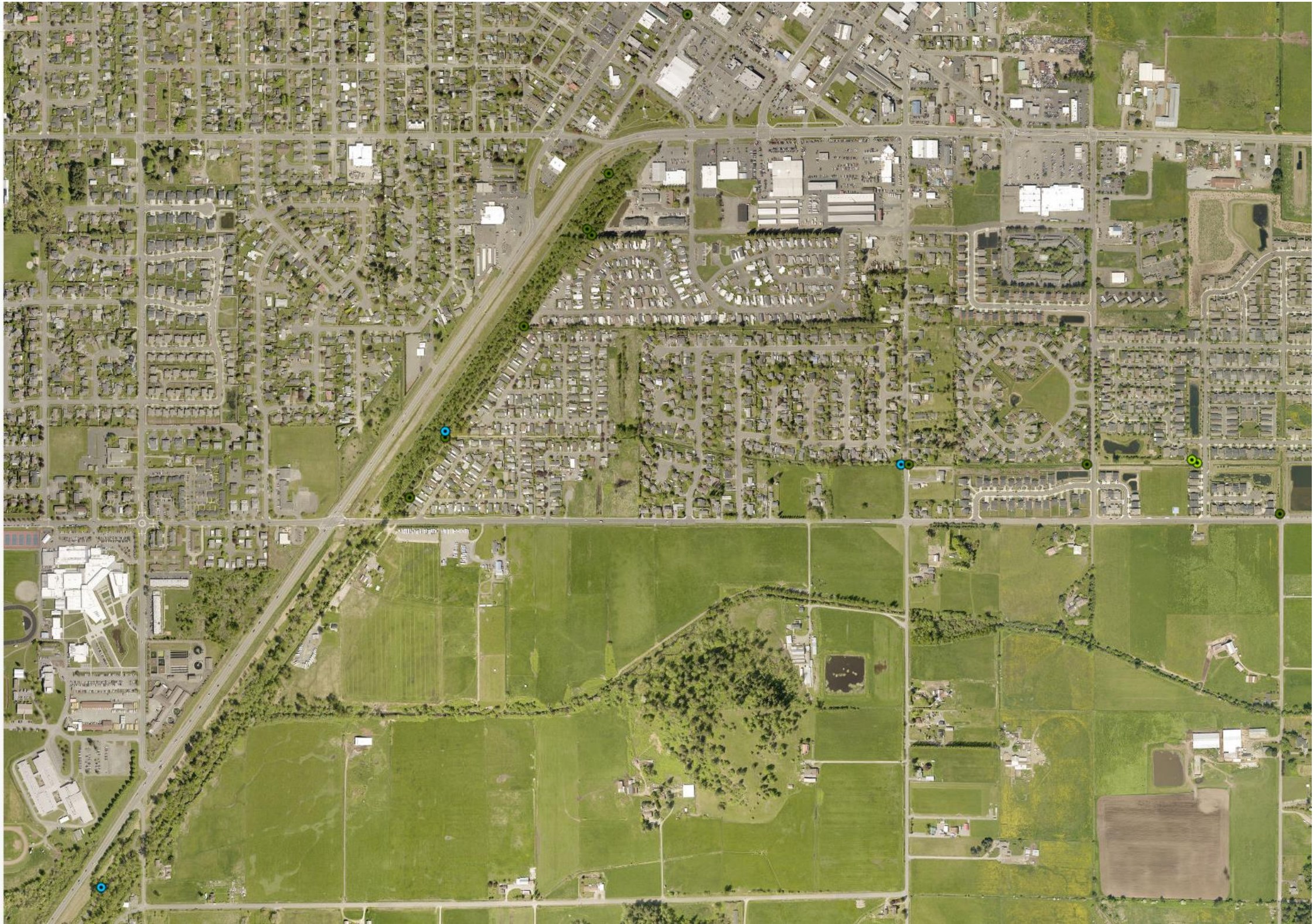
- MS4 Mapping: Confirmed that there are no City owned or operated piped MS4 outfalls which discharge to the Lower White River or its primary tributaries within the TMDL implementation area.
- Illicit discharge field screening was performed per the requirements of section S5.C.5 of the Phase II municipal stormwater permit. In 2025, field screening was performed in 56 percent of the MS4 coverage area through routine MS4 catch basin inspection. Implemented schedules and activities identified in S5.C.5 in response to any confirmed illicit discharges or connections found.
- As the city does not own or operate any piped MS4 outfalls to the Lower White River or its primary tributaries, screening of any outfalls and subsequent sampling/testing for presence of soluble reactive phosphorus as described in the TMDL implementation plan is not applicable to the city and therefore not performed.
- No later than June 30<sup>th</sup>, 2027, the City of Enumclaw will require Phosphorus Treatment BMPs at all new development and redevelopment projects within the TMDL implementation area that require Minimum Requirement #6, Runoff Treatment per the treatment thresholds outlined in the Stormwater Management Manual for Western Washington.

# City of Enumclaw 2025 Bacteria Field Screening Location Map Boise Creek Basin Area

Legend

IDDE Sampling Locations

- Pending Results
- < 1
- 1 - 50
- 51 - 100
- 101 - 410
- 411 - 1000
- > 1000



Note: Shows sample locations for 2025 only and the last test result at the sampling location.

**2025 City of Enumclaw Bacteria Sampling Results**

Note: Results are for sampling conducted in both the Boise Creek and Newaukum Creek watersheds

| SAMPLEID | Sample Description                     | Sampled By | Air Temperature (F) | Weather Condition | Last Runoff | Ever Flow | Visual Turbidity Assessment | Fecal Coliform Result (CFU) | E. Coli Result (CFU) | Additional Observations                      | sampleDate | Time_fix |
|----------|--|------------|---------------------|-------------------|-------------|-----------|-----------------------------|-----------------------------|----------------------|--|------------|----------|
| PS04161  | Lateral A Outfall                      | epalmer    | 35                  | cloudy            | LTweek      | active    | clear                       | 10                          |                      | Blue heron upstream                          | 1/16/2025  |          |
| PS04162  | Main Flume Upstream of Lateral A       | epalmer    | 35                  | cloudy            | LTweek      | active    | clear                       | 10                          |                      |  | 1/16/2025  |          |
| PS04283  | West Flow                              | dchrome    | 35                  | cloudy            | LTweek      | active    | clear                       | 180                         |                      |  | 1/16/2025  |          |
| PS04293  | West Flow                              | dchrome    | 35                  | cloudy            | LTweek      | active    | clear                       | 1000                        |                      | No sewer smell                               | 1/16/2025  |          |
| PS04292  | South Stub                             | epalmer    | 35                  | cloudy            | LTweek      | active    | clear                       | 1500                        |                      | No Sewer smell                               | 1/16/2025  |          |
| PS04286  | West Flow                              | epalmer    | 35                  | cloudy            | LTweek      | active    | clear                       | 1500                        |                      | Clear Smell                                  | 1/16/2025  |          |
| PS04286  | North Flow                             | epalmer    | 35                  | cloudy            | LTweek      | active    | clear                       | 30                          |                      |  | 1/16/2025  |          |
| PS04291  | Upstream flow                          | epalmer    | 35                  | cloudy            | LTweek      | active    | clear                       | 1750                        |                      | Sewer Smell                                  | 1/16/2025  |          |
| PS04290  | Upstream flow                          | epalmer    | 35                  | cloudy            | LTweek      | active    | clear                       | 1500                        |                      |  | 1/16/2025  |          |
| PS04288  | Upstream flow                          | epalmer    | 35                  | cloudy            | LTweek      | active    | clear                       | 1500                        |                      | Sewer Smell                                  | 1/16/2025  |          |
| PS04288  | Upstream flow                          | epalmer    | 27                  | sunny             | GTweek      | active    | clear                       |                             |                      | 5 No sewer smell                             | 1/23/2025  |          |
| PS04289  | West Flow                              | epalmer    | 27                  | sunny             | GTweek      | active    | clear                       |                             |                      | 40 None                                      | 1/23/2025  |          |
| PS04161  | Lateral A Outfall                      | epalmer    | 39                  | partlySunny       | LT24        | active    | clear                       | 30                          |                      |  | 2/20/2025  |          |
| PS04162  | Main Flume Upstream of Lateral A       | epalmer    | 39                  | partlySunny       | LT24        | active    | clear                       | 0                           |                      |  | 2/20/2025  |          |
| PS04165  | Lateral A West of Blake                | epalmer    | 39                  | sunny             | LT24        | active    | clear                       | 30                          |                      |  | 2/20/2025  |          |
| PS04166  | Lateral A West of Watson               | dchrome    | 39                  | sunny             | LT24        | active    | clear                       | 30                          |                      |  | 2/20/2025  |          |
| PS01925  | West/East Comingled flow               | dchrome    | 39                  | sunny             | LT24        | active    | clear                       | 0                           |                      |  | 2/20/2025  |          |
| PS04289  | West Flow                              | epalmer    | 39                  | partlySunny       | LT24        | active    | clear                       | 760                         |                      | No Air sewer smell, yes on sample smell      | 2/20/2025  |          |
| PS04288  | Upstream flow                          | epalmer    | 39                  | cloudy            | LT24        | active    | clear                       | 810                         |                      | Air sewer smell, no sample smell             | 2/20/2025  |          |
| PS04290  | Upstream flow                          | epalmer    | 39                  | partlySunny       | LT24        | active    | clear                       | 660                         |                      | No air/sample smell                          | 2/20/2025  |          |
| PS04283  | West Flow                              | dchrome    | 39                  | partlySunny       | LT24        | active    | clear                       | 280                         |                      | Slight air/sample smell                      | 2/20/2025  |          |
| PS04287  | West flow                              | epalmer    | 39                  | cloudy            | LT24        | active    | clear                       | 850                         |                      | 0 No air/sample smell                        | 3/20/2025  |          |
| PS04152  | West of Foothills Trail Bridge Outfall | epalmer    | 45                  | rain              | current     | active    | clear                       | 0                           |                      | Signs of Homeless camp/trash                 | 3/20/2025  |          |
| PS04161  | Lateral A Outfall                      | epalmer    | 45                  | rain              | current     | active    | clear                       | 100                         |                      |  | 3/20/2025  |          |
| PS04165  | Lateral A West of Blake                | epalmer    | 45                  | rain              | current     | active    | clear                       | 10                          |                      |  | 3/20/2025  |          |
| PS04166  | Lateral A West of Watson               | dchrome    | 45                  | rain              | current     | active    | clear                       | 30                          |                      |  | 3/20/2025  |          |
| PS1485   | Warner Outfall towards Lateral A       | epalmer    | 45                  | rain              | current     | active    | clear                       | 10                          |                      |  | 3/20/2025  |          |
| PS04164  | Dickson Ditch Outfall                  | epalmer    | 45                  | rain              | current     | active    | clear                       | 40                          |                      |  | 3/20/2025  |          |
| PS04163  | Lateral B outlet                       | epalmer    | 45                  | rain              | current     | active    | clear                       | 50                          |                      |  | 3/20/2025  |          |
| PS04188  | Main Flume at Dickson                  | epalmer    | 45                  | rain              | current     | active    | modTurbid                   | 10                          |                      | first flush from storm                       | 3/20/2025  |          |
| PS04282  | Discharge Pipe                         | dchrome    | 45                  | rain              | current     | active    | clear                       | 640                         |                      |  | 3/20/2025  |          |
| PS04162  | Main Flume Upstream of Lateral A       | epalmer    | 58                  | cloudy            | LT24        | active    | clear                       | 1000                        |                      | Stagnant waters, Blue Heron & Ducks Upstream | 8/25/2024  |          |
| PS04162  | Main Flume Upstream of Lat A           | epalmer    | 62                  | sunny             | GTweek      | active    | clear                       | 120                         |                      |  | 9/25/2024  |          |
| PS04161  | Lateral A Outfall                      | epalmer    | 45                  | sunny             | LTweek      | active    | clear                       | 140                         |                      |  | 4/17/2025  |          |
| PS04162  | Main Flume Upstream of Lat A           | epalmer    | 45                  | sunny             | LTweek      | active    | clear                       | 40                          |                      |  | 4/17/2025  |          |
| PS04165  | Lateral A West of Blake                | dchrome    | 45                  | sunny             | LTweek      | active    | clear                       | 20                          |                      |  | 4/17/2025  |          |
| PS04166  | Lateral A West of Watson               | dchrome    | 45                  | sunny             | LTweek      | active    | clear                       | 0                           |                      |  | 4/17/2025  |          |
| PS04167  | Lateral A at Cooper Lane               | dchrome    | 45                  | sunny             | LTweek      | active    | clear                       | 40                          |                      |  | 4/17/2025  |          |
| PS04282  | Discharge Pipe                         | dchrome    | 45                  | sunny             | LTweek      | active    | clear                       | 30                          |                      |  | 4/17/2025  |          |
| PS04283  | West Flow                              | dchrome    | 45                  | sunny             | LTweek      | active    | clear                       | 0                           |                      |  | 4/17/2025  |          |
| PS04289  | West Flow                              | dchrome    | 45                  | sunny             | LTweek      | active    | clear                       | 1000                        |                      |  | 4/17/2025  |          |
| PS01925  | West/East Comingled flow               | dchrome    | 45                  | sunny             | LTweek      | active    | clear                       | 10                          |                      |  | 4/17/2025  |          |
| PS04161  | Lateral A Outfall                      | epalmer    | 47                  | sunny             | LT24        | active    | clear                       | 200                         |                      |  | 5/15/2025  |          |
| PS04162  | Main Flume Upstream of Lat A           | epalmer    | 47                  | sunny             | LT24        | active    | clear                       | 3000                        |                      | Actual result TNTC                           | 5/15/2025  |          |
| PS04165  | Lateral A West of Blake                | dchrome    | 47                  | sunny             | LT24        | active    | clear                       | 50                          |                      |  | 5/15/2025  |          |
| PS04166  | Lateral A West of Watson               | dchrome    | 47                  | sunny             | LT24        | active    | clear                       | 50                          |                      |  | 5/15/2025  |          |
| PS04167  | Lateral A at Cooper Lane               | dchrome    | 49                  | sunny             | LT24        | active    | clear                       | 10                          |                      |  | 5/15/2025  |          |
| PS04163  | Lateral B outlet                       | dchrome    | 49                  | partlySunny       | LT24        | active    | clear                       | 3000                        |                      | Actual is TNTC                               | 5/15/2025  |          |
| PS04168  | Main Flume West Outfall                | dchrome    | 49                  | partlySunny       | LT24        | stagnant  | clear                       | 0                           |                      |  | 5/15/2025  |          |
| PS04282  | Discharge Pipe                         | dchrome    | 49                  | partlySunny       | LT24        | active    | clear                       | 0                           |                      |  | 5/15/2025  |          |
| PS04283  | West Flow                              | dchrome    | 49                  | partlySunny       | LT24        | stagnant  | slightlyTurbid              | 0                           |                      |  | 5/15/2025  |          |
| PS04289  | West Flow                              | dchrome    | 49                  | sunny             | LT24        | stagnant  | slightlyTurbid              | 0                           |                      |  | 5/15/2025  |          |
| PS04161  | Lateral A Outfall                      | epalmer    | 53                  | cloudy            | GTweek      | active    | clear                       | 300                         |                      |  | 6/12/2025  |          |
| PS04162  | Main Flume Upstream of Lat A           | epalmer    | 53                  | cloudy            | GTweek      | stagnant  | clear                       | 520                         |                      |  | 6/12/2025  |          |
| PS04165  | Lateral A West of Blake                | dchrome    | 53                  | cloudy            | GTweek      | active    | clear                       | 70                          |                      |  | 6/12/2025  |          |
| PS04166  | Lateral A West of Watson               | dchrome    | 53                  | cloudy            | GTweek      | active    | clear                       | 110                         |                      |  | 6/12/2025  |          |
| PS04167  | Lateral A at Cooper Lane               | dchrome    | 53                  | cloudy            | GTweek      | stagnant  | clear                       | 20                          |                      |  | 6/12/2025  |          |
| PS04041  | Koras Pond                             | dchrome    | 53                  | cloudy            | GTweek      | stagnant  | clear                       | 80                          |                      |  | 6/12/2025  |          |
| PS04163  | Lateral B outlet                       | dchrome    | 53                  | cloudy            | GTweek      | active    | clear                       | 3000                        |                      | Actual is TNTC                               | 6/12/2025  |          |
| PS04283  | West Flow                              | dchrome    | 53                  | cloudy            | GTweek      | stagnant  | slightlyTurbid              | 0                           |                      |  | 6/12/2025  |          |
| PS04293  | West Flow                              | dchrome    | 54                  | cloudy            | GTweek      | stagnant  | clear                       | 0                           |                      |  | 6/12/2025  |          |
| PS04289  | West Flow                              | dchrome    | 55                  | cloudy            | GTweek      | stagnant  | slightlyTurbid              | 0                           |                      |  | 6/12/2025  |          |
| PS04162  | Main Flume Upstream of Lat A           | epalmer    | 64                  | sunny             | GTweek      | stagnant  | clear                       | 660                         |                      |  | 7/17/2025  |          |
| PS04161  | Lateral A Outfall                      | epalmer    | 64                  | sunny             | GTweek      | active    | clear                       | 330                         |                      |  | 7/17/2025  |          |
| PS04165  | Lateral A West of Blake                | dchrome    | 64                  | sunny             | GTweek      | active    | clear                       | 50                          |                      |  | 7/17/2025  |          |
| PS04166  | Lateral A West of Watson               | dchrome    | 64                  | sunny             | GTweek      | active    | clear                       | 60                          |                      |  | 7/17/2025  |          |
| PS04167  | Lateral A at Cooper Lane               | dchrome    | 64                  | sunny             | GTweek      | active    | clear                       | 40                          |                      |  | 7/17/2025  |          |
| PS04289  | West Flow                              | dchrome    | 64                  | sunny             | GTweek      | stagnant  | slightlyTurbid              | 1000                        |                      |  | 7/17/2025  |          |
| PS04294  | 436th Culvert Outfall                  | dchrome    | 65                  | sunny             | GTweek      | stagnant  | clear                       | 750                         |                      |  | 7/17/2025  |          |
| PS04189  | Lateral A East of Blake                | dchrome    | 64                  | sunny             | GTweek      | active    | clear                       | 150                         |                      |  | 7/17/2025  |          |
| PS04161  | Lateral A Outfall                      | epalmer    | 53                  | sunny             | LTweek      | active    | clear                       | 20                          |                      |  | 8/21/2025  |          |
| PS04162  | Main Flume Upstream of Lat A           | epalmer    | 53                  | sunny             | LTweek      | active    | clear                       | 300                         |                      |  | 8/21/2025  |          |
| PS04165  | Lateral A West of Blake                | dchrome    | 53                  | sunny             | LTweek      | active    | clear                       | 200                         |                      |  | 8/21/2025  |          |
| PS04189  | Lateral A East of Blake                | dchrome    | 53                  | sunny             | LTweek      | active    | clear                       | 280                         |                      |  | 8/21/2025  |          |
| PS04166  | Lateral A West of Watson               | dchrome    | 54                  | sunny             | LTweek      | active    | clear                       | 30                          |                      |  | 8/21/2025  |          |
| PS04167  | Lateral A at Cooper Lane               | dchrome    | 54                  | sunny             | LTweek      | stagnant  | clear                       | 270                         |                      | lots veg choking channel                     | 8/21/2025  |          |
| PS04041  | Koras Pond                             | dchrome    | 54                  | sunny             | LTweek      | active    | clear                       | 60                          |                      |  | 8/21/2025  |          |
| PS04163  | Lateral B outlet                       | dchrome    | 54                  | sunny             | LTweek      | active    | clear                       | 180                         |                      |  | 8/21/2025  |          |
| PS04168  | Main Flume West Outfall                | dchrome    | 54                  | sunny             | LTweek      | active    | clear                       | 0                           |                      |  | 8/21/2025  |          |
| PS04294  | 436th Culvert Outfall                  | dchrome    | 55                  | sunny             | LTweek      | active    | clear                       | 3000                        |                      | Actual Result TNTC                           | 8/21/2025  |          |
| PS04161  | Lateral A Outfall                      | epalmer    | 52                  | sunny             | LTweek      | active    | clear                       | 10                          |                      |  | 9/18/2025  |          |
| PS04162  | Main Flume Upstream of Lat A           | epalmer    | 52                  | sunny             | LTweek      | stagnant  | clear                       | 1610                        |                      |  | 9/18/2025  |          |
| PS04165  | Lateral A West of Blake                | dchrome    | 51                  | sunny             | LTweek      | active    | clear                       | 320                         |                      |  | 9/18/2025  |          |
| PS04189  | Lateral A East of Blake                | dchrome    | 51                  | sunny             | LTweek      | active    | clear                       | 310                         |                      |  | 9/18/2025  |          |
| PS04166  | Lateral A West of Watson               | dchrome    | 51                  | sunny             | LTweek      | active    | clear                       | 60                          |                      |  | 9/18/2025  |          |
| PS04041  | Koras Pond                             | dchrome    | 51                  | sunny             | LTweek      | active    | clear                       | 140                         |                      |  | 9/18/2025  |          |
| PS04167  | Lateral A at Cooper Lane               | dchrome    | 51                  | sunny             | LTweek      | stagnant  | clear                       | 210                         |                      | lots veg choking channel                     | 9/18/2025  |          |
| PS04163  | Lateral B outlet                       | dchrome    | 51                  | sunny             | LTweek      | stagnant  | clear                       | 360                         |                      |  | 9/18/2025  |          |
| PS03731  | McHugh 48in Outfall                    | dchrome    | 51                  | sunny             | LTweek      | active    | clear                       | 40                          |                      |  | 9/18/2025  |          |
| PS04294  | 436th Culvert Outfall                  | dchrome    | 51                  | sunny             | LTweek      | stagnant  | clear                       | 1810                        |                      |  | 9/18/2025  |          |
| PS04162  | Main Flume Upstream of Lateral A       | dchrome    | 35                  | partlySunny       | LTweek      | active    | clear                       | 270                         |                      |  | 10/16/2025 |          |
| PS04161  | Lateral A Outfall                      | dchrome    | 35                  | partlySunny       | LTweek      | active    | clear                       | 10                          |                      |  | 10/16/2025 |          |
| PS04165  | Lateral A West of Blake                | dchrome    | 35                  | partlySunny       | LTweek      | active    | clear                       | 70                          |                      |  | 10/16/2025 |          |
| PS04189  | Lateral A East of Blake                | dchrome    | 35                  | partlySunny       | LTweek      | active    | clear                       | 40                          |                      |  | 10/16/2025 |          |
| PS04166  | Lateral A West of Watson               | dchrome    | 35                  | sunny             | LTweek      | active    | clear                       | 20                          |                      |  | 10/16/2025 |          |
| PS04167  | Lateral A at Cooper Lane               | dchrome    | 35                  | sunny             | LTweek      | active    | clear                       | 80                          |                      |  | 10/16/2025 |          |
| PS04041  | Koras Pond                             | dchrome    | 35                  | sunny             | LTweek      | active    | clear                       | 60                          |                      |  | 10/16/2025 |          |
| PS04163  | Lateral B outlet                       | dchrome    | 35                  | sunny             | LTweek      | active    | clear                       | 40                          |                      |  | 10/16/2025 |          |
| PS04168  | Main Flume West Outfall                | dchrome    | 35                  | sunny             | LTweek      | stagnant  | clear                       | 60                          |                      |  | 10/16/2025 |          |
| PS04294  | 436th Culvert Outfall                  | dchrome    | 36                  | sunny             | LTweek      | active    | clear                       | 20                          |                      |  | 10/16/2025 |          |
| PS01925  | West/East Comingled flow               | dchrome    | 42                  | rain              | current     | active    | clear                       | 120                         |                      |  | 11/20/2025 |          |
| PS04289  | West Flow                              | dchrome    | 42                  | rain              | current     | active    | clear                       | 2900                        |                      |  | 11/20/2025 |          |
| PS04293  | West Flow                              | dchrome    | 42                  | mostlyCloudy      | current     | active    | clear                       | 3870                        |                      |  | 11/20/2025 |          |
| PS04283  | West Flow                              | dchrome    | 42                  | mostlyCloudy      | current     | active    | clear                       | 1000                        |                      |  | 11/20/2025 |          |
| PS04282  | Discharge Pipe                         | dchrome    | 42                  | mostlyCloudy      | current</   |           |                             |                             |                      |  |            |          |