



How to Read the OMNI

Quick Guide

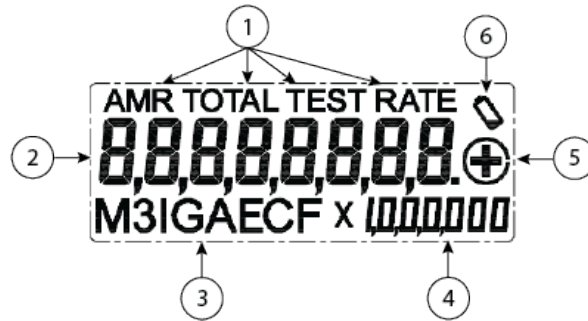
ELECTRONIC REGISTER FEATURES

- Hermetically sealed with an electronic pickup containing no mechanical gearing
- Displays AMR, Totalization, Resettable Test Totalizer, and Rate of Flow
- AMR resolution units that are fully programmable
- Pulse output frequency that is fully programmable
- Integral customer data logging capability
- Integral resettable accuracy testing feature compatible with the Sensus Flow Verification Software.
- Large, easy-to-read LCD display that shows both forward and reverse flow directions
- 10-year battery life warranty

PULSE OUTPUT RESOLUTION

Size	Unit of Measure	Min. Pulse Res.	Test Mode LCD Res.
1.5"-3"	m ³	0.01	0.0001
	ft. ³	0.1	0.001
	gal	1	0.01
4"-10"	m ³	0.1	0.001
	ft. ³	1	0.01
	gal	10	0.1

Register Display



- (1) Reading Mode¹
AMR: Shows the reported units.
Total: Shows the total registration through the meter (all 8 digits).
Test: Shows the registration through the meter, but can be reset to 0 to perform a test.
Rate: Shows the flow rate of water through the meter. Unit of measure will match what is programmed in AMR mode.
 - Gallons > Gallons per Minute
 - Cubic Feet > Cubic Feet per Minute
 - Cubic Meters > Cubic Meters per Hour
- (2) AMR Digit Bar (4 to 8 Digits)
Shows which digits will be reported when the meter is read through the communications interface.
- (3) Unit of Measure
Gallon (GAL), Cubic Feet (CF), Cubic Meter (M3), Imperial Gallon (IGAL), Acre Feet (AF)
- (4) AMR Value Multiplier (Only in AMR Mode)
- (5) Flow Icon

Display	Indicates
Flashing Circle with +	Positive Flow
Flashing circle with -	Negative Flow
No Icon/Icon Not Flashing	Flow Stopped
- (6) Battery Icon
Turns on when the battery is near the end of life (≈11 years). AMR Digits will sequentially blink before the battery dies (≈15 years).

¹ Regardless of Reading Mode, the OMNI will always send the serial number and AMR reading when interrogated.

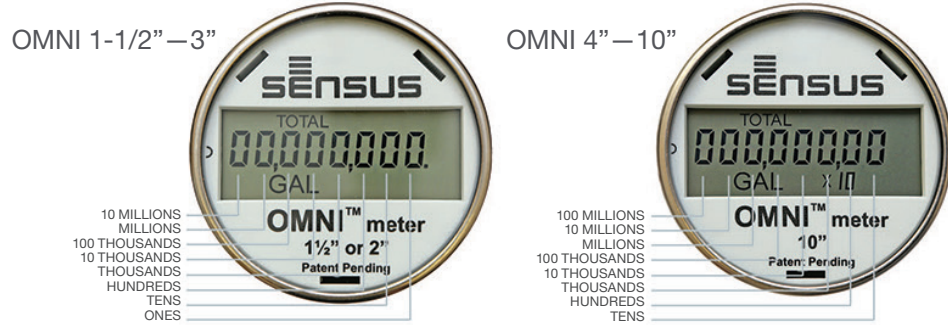


How to Read the OMNI

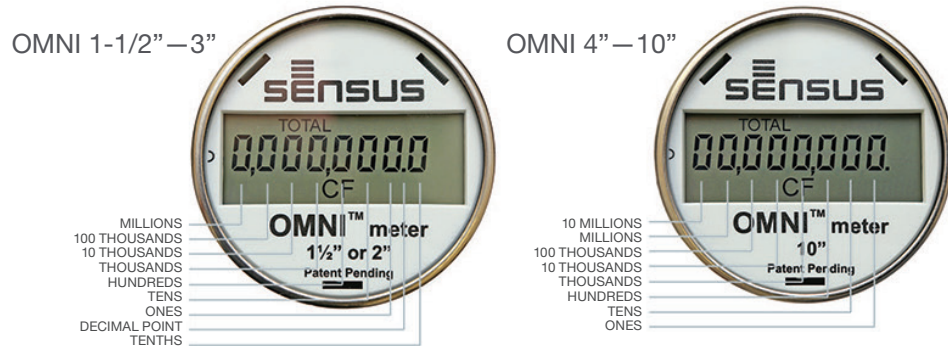
Quick Guide

Reading the OMNI Register

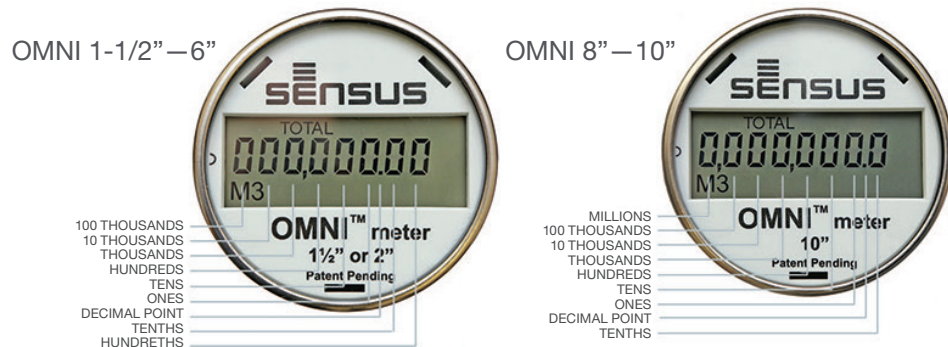
Gallons Registers



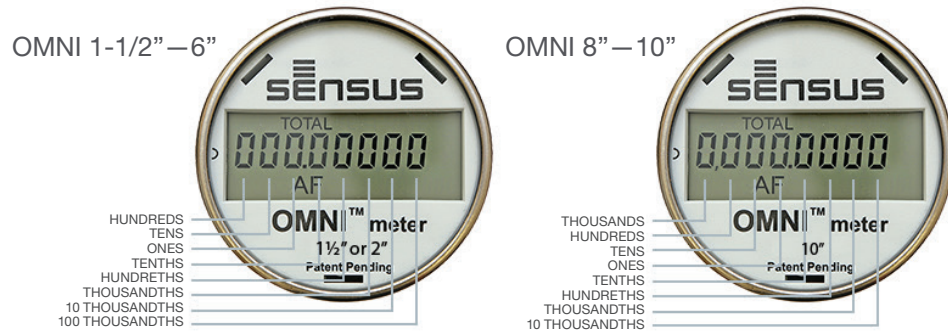
Cubic Feet Registers



Cubic Meter Registers



Acre Feet Registers



637 Davis Drive
Morrisville, NC 27560
1-800-638-3748
sensus.com

©2019 Sensus. All products purchased and services performed are subject to Sensus' terms of sale, available at either sensus.com/TC or 1-800-638-3748. Sensus reserves the right to modify these terms and conditions in its own discretion without notice to the customer. The Sensus logo is a registered trademark of Sensus.

This document is for informational purposes only, and SENSUS MAKES NO EXPRESS WARRANTIES IN THIS DOCUMENT. FURTHERMORE, THERE ARE NO IMPLIED WARRANTIES, INCLUDING WITHOUT LIMITATION, WARRANTIES AS TO FITNESS FOR A PARTICULAR PURPOSE AND MERCHANTABILITY. ANY USE OF THE PRODUCTS THAT IS NOT SPECIFICALLY PERMITTED HEREIN IS PROHIBITED.